

| REVISIONS | | | |
|-----------|---|------------------|----------------------|
| LTR | DESCRIPTION | DATE | APPROVED |
| A | Additions and corrections. | 7 April 88 | David E. Moore |
| B | Added suggested source of supply, additions and corrections. | 5 August 88 | Edward H. Back |
| C | Added "J" style leads and suggested sources of supply. | 3 March 89 | David E. Moore |
| D | Added suggested sources of supply, new column to table I and made corrections. | 6 December 89 | David E. Moore |
| E | Added suggested source of supply, modified tolerance on "D" dimensions. Editorial changes throughout. | 6 May 91 | David E. Moore |
| F | Deleted and added suggested sources of supply, updated a manufacturer's part numbers, modified "D" dimensions. Editorial changes throughout. | 10 March 92 | David E. Moore |
| G | Added a precautionary note to page 1, updated manufacturer's part numbers. | 20 August 92 | David E. Moore |
| H | Deleted and added suggested sources of supply. Added dimension F to figure 1. Corrections to manufacturer's PIN's. Editorial changes throughout. | 4 March 94 | David E. Moore |
| J | Changes in accordance with NOR 5910-R003-96 | 23 May 96 | David E. Moore |
| K | Changes in accordance with NOR 5910-R001-97 | 24 Mar 97 | David E. Moore |
| L | Changes in accordance with NOR 5910-R002-97 | 29 May 97 | David E. Moore |
| M | Updated to reference MIL-PRF-49470. Deleted suggested source of supply. | 9 September 98 | David E. Moore |
| N | Added suggested source of supply, Corrected case code error for -029 part. Corrected lead style for -089 through -094 parts. Added -097 part number to table IV for vendor B. | 15 July 99 | Kendall A. Cottongim |
| P | Inactivated various parts for new design. Corrected PIN error for -274. Changes in table II and III to reflect MIL-PRF-49470 changes. Adjusted suggested sources of supply. | 29 February 2000 | Kendall A. Cottongim |
| R | Removed suggested source of supply. | 16 November 00 | Kendall A. Cottongim |
| T | Inactivated all 200 V parts, added cross reference to MIL-PRF-49470, and added suggested source. | 1 October 2002 | Kendall A. Cottongim |
| U | Updated name and address of vendor B. | 4 November 2002 | Kendall A. Cottongim |

PREVIOUS CAGE CODE 14933 SUPERSEDED BY 037Z3.

NOTE: The following parts are **inactive for new design** after the date of this drawing since similar parts are available from a qualified source in MIL-PRF-49470:
 All 50 V parts (dash numbers 1 - 54, 223 - 228, and 241 - 300),
 All 100 V parts (dash numbers 55 - 112, 229 - 230, 301 - 360),
 All 200 V parts (dash numbers 113 - 172, 361 - 420), and
 the following 500 V parts (dash numbers 173 - 208, 231 - 234, 421 - 460).
 The only parts still active are 500 V, case code 1, 2, and 6 parts (no source yet in MIL-PRF-49470).
THIS SPECIFICATION WILL BE CANCELLED once there is a qualified source for the remaining 500 V parts. Use MIL-PRF-49470 for new design (see table on next page).

Prepared in accordance with MIL-STD-100

Selected item drawing

| | | | | | | | | | | | | | | | | | | | | | | |
|---|---|---------------------------------|----|----|----|----|----|----|----|----|---|---------------------|----|----|----|----|----|----|----|----|---|---|
| REV | U | U | U | U | U | U | U | U | U | U | U | U | | | | | | | | | | |
| PAGE | 19 | 20 | 21 | 22 | 23 | 24 | 25 | 26 | 27 | 28 | 29 | 30 | | | | | | | | | | |
| REV STATUS OF PAGES | REV | | U | U | U | U | U | U | U | U | U | U | U | U | U | U | U | U | U | U | U | U |
| | PAGES | | 1 | 2 | 3 | 4 | 5 | 6 | 7 | 8 | 9 | 10 | 11 | 12 | 13 | 14 | 15 | 16 | 17 | 18 | | |
| PMIC N/A | PREPARED BY ROBERT E. GRILLOT | | | | | | | | | | DEFENSE SUPPLY CENTER, COLUMBUS COLUMBUS, OH | | | | | | | | | | | |
| Original date of drawing 3 February 1988 | CHECKED BY HERALDINE JOHNSON | | | | | | | | | | TITLE CAPACITOR, CERAMIC, SWITCH MODE POWER SUPPLY | | | | | | | | | | | |
| | APPROVED BY DAVID E. MOORE | | | | | | | | | | DWG NO. 87106 | | | | | | | | | | | |
| | SIZE A | CODE IDENT. NO. 14933 | | | | | | | | | | PAGE 1 OF 30 | | | | | | | | | | |

1. SCOPE

1.1 Scope. This drawing and MIL-PRF-49470 describe the requirements for ceramic switch mode power supply capacitors.

1.2 Part or Identifying Number (PIN). The complete PIN shall be as follows:



1.3 MIL-PRF-49470 VS 87106. MIL-PRF-49470 capacitors are preferred over DSCC-DWG-87106 capacitors. The MIL-PRF-49470 specification was developed as part of a cooperative effort between the US Military, NASA and the SMPS suppliers to produce a robust replacement for the DSCC drawing. The military specification product provides additional quality assurance provisions that are NOT required by the DSCC drawing. Two product levels are offered in MIL-PRF-49470: the standard "B" level and the high reliability "T" level. Some of the benefits of the MIL-PRF-49470 product over the 87106 product include: Formal qualification process (QPL established); MIL-STD-790 compliance; DSCC audits; routine qualification maintenance testing (ie., life testing); group A percent defective allowed (PDA) specified; prohibits mixing of chips from different production lots within a single SMPS stack lot.

MIL-PRF-49470 "T" Level product is recommended for all high reliability applications. MIL-PRF-49470 "T" level product requires in-process inspections and additional group A and B screening inspections that are not part of the normal "B" level flow: In-process screening that includes non-destructive internal examination (chip level) and destructive physical analysis (chip level); group A destructive physical analysis (finished stack level); group B lot specific humidity, steady-state, low voltage (lot sample test); and group B lot specific thermal shock & life test (lot sample test).

1.4 MIL-PRF-49470 VS 87106 PIN cross reference.

1.4.1 The following cross reference table is believed to be accurate, but is not guaranteed.

1.4.2 MIL-PRF-49470 also contains the following additional capacitors that are not available in 87106:

- a. "L" lead configuration parts.
- b. Lower profile parts (larger footprint, fewer chips stacked).
- c. 88011 CG (BP) dielectric capacitors.

1.4.3 For T level (high reliability) product, replace the "M" in PIN with "T". (M49470R01474KCN becomes T49470R01474KCN).

MIL-PRF-49470 VS 87106 Cross Reference Table.

| 87106- | MIL-PRF-49470/1 | 87106- | MIL-PRF-49470/1 | 87106- | MIL-PRF-49470/1 | 87106- | MIL-PRF-49470/1 |
|--------|-----------------|--------|-----------------|--------|-----------------|--------|-----------------|
| 001 | M49470X01105KAN | 018 | M49470X01475MAN | 035 | M49470X01336KAN | 053 | M49470X01277KAN |
| 002 | M49470X01105MAN | 019 | M49470X01565KAN | 036 | M49470X01336MAN | 054 | M49470X01277MAN |
| 003 | M49470X01125KAN | 020 | M49470X01565MAN | 038 | M49470X01396MAN | 055 | M49470X01684KBN |
| 004 | M49470X01125MAN | 021 | M49470X01825KAN | 039 | M49470X01476KAN | 056 | M49470X01684MBN |
| 005 | M49470X01155KAN | 022 | M49470X01825MAN | 040 | M49470X01476MAN | 057 | M49470X01824KBN |
| 006 | M49470X01155MAN | 023 | M49470X01106KAN | 041 | M49470X01686KAN | 058 | M49470X01824MBN |
| 007 | M49470X01185KAN | 024 | M49470X01106MAN | 042 | M49470X01686MAN | 059 | M49470X01105KBN |
| 008 | M49470X01185MAN | 025 | M49470X01126KAN | 043 | M49470X01826KAN | 060 | M49470X01105MBN |
| 009 | M49470X01225KAN | 026 | M49470X01126MAN | 044 | M49470X01826MAN | 061 | M49470X01125KBN |
| 010 | M49470X01225MAN | 027 | M49470X01156KAN | 045 | M49470X01107KAN | 062 | M49470X01125MBN |
| 011 | M49470X01275KAN | 028 | M49470X01156MAN | 046 | M49470X01107MAN | 063 | M49470X01155KBN |
| 012 | M49470X01275MAN | 029 | M49470X01186KAN | 047 | M49470X01157KAN | 064 | M49470X01155MBN |
| 013 | M49470X01335KAN | 030 | M49470X01186MAN | 048 | M49470X01157MAN | 065 | M49470X01185KBN |
| 014 | M49470X01335MAN | 031 | M49470X01226KAN | 049 | M49470X01187KAN | 066 | M49470X01185MBN |
| 015 | M49470X01395KAN | 032 | M49470X01226MAN | 050 | M49470X01187MAN | 067 | M49470X01225KBN |
| 016 | M49470X01395MAN | 033 | M49470X01276KAN | 051 | M49470X01227KAN | 068 | M49470X01225MBN |
| 017 | M49470X01475KAN | 034 | M49470X01276MAN | 052 | M49470X01227MAN | 069 | M49470X01275KBN |

| | | | |
|--|----------|----------------|--------------|
| DEFENSE SUPPLY CENTER, COLUMBUS | SIZE | CODE IDENT NO. | DWG NO. |
| COLUMBUS, OHIO | A | 14933 | 87106 |
| | | REV U | PAGE 2 |

MIL-PRF-49470 VS 87106 Cross Reference Table - Continued.

| 87106- | MIL-PRF-49470/1 | 87106- | MIL-PRF-49470/1 | 87106- | MIL-PRF-49470/1 | 87106- | MIL-PRF-49470/1 |
|--------|-----------------|--------|-----------------|--------|-----------------|--------|-----------------|
| 070 | M49470X01275MBN | 123 | M49470R01125KCN | 176 | M49470Q01184MEN | 229 | M49470X01106KBN |
| 071 | M49470X01335KBN | 124 | M49470R01125MCN | 177 | M49470Q01224KEN | 230 | M49470X01106MBN |
| 072 | M49470X01335MBN | 125 | M49470R01155KCN | 178 | M49470Q01224MEN | 231 | M49470Q01824KEN |
| 073 | M49470X01395KBN | 126 | M49470R01155MCN | 179 | M49470Q01274KEN | 232 | M49470Q01824MEN |
| 074 | M49470X01395MBN | 127 | M49470R01185KCN | 180 | M49470Q01274MEN | 233 | M49470Q01225KEN |
| 075 | M49470X01475KBN | 128 | M49470R01185MCN | 181 | M49470Q01334KEN | 234 | M49470Q01225MEN |
| 076 | M49470X01475MBN | 129 | M49470R01225KCN | 182 | M49470Q01334MEN | 235 | M49470Q01685KEN |
| 077 | M49470X01565KBN | 130 | M49470R01225MCN | 183 | M49470Q01394KEN | 236 | M49470Q01685MEN |
| 078 | M49470X01565MBN | 131 | M49470R01275KCN | 184 | M49470Q01394MEN | 237 | M49470Q01156KEN |
| 079 | M49470X01685KBN | 132 | M49470R01275MCN | 185 | M49470Q01474KEN | 238 | M49470Q01156MEN |
| 080 | M49470X01685MBN | 133 | M49470R01335KCN | 186 | M49470Q01474MEN | 239 | M49470Q01226KEN |
| 081 | M49470X01825KBN | 134 | M49470R01335MCN | 187 | M49470Q01564KEN | 240 | M49470Q01226MEN |
| 082 | M49470X01825MBN | 135 | M49470R01395KCN | 188 | M49470Q01564MEN | 241 | M49470X01105KAJ |
| 083 | M49470X01126KBN | 136 | M49470R01395MCN | 189 | M49470Q01684KEN | 242 | M49470X01105MAJ |
| 084 | M49470X01126MBN | 137 | M49470R01475KCN | 190 | M49470Q01684MEN | 243 | M49470X01125KAJ |
| 085 | M49470X01156KBN | 138 | M49470R01475MCN | 191 | M49470Q01105KEN | 244 | M49470X01125MAJ |
| 086 | M49470X01156MBN | 139 | M49470R01565KCN | 192 | M49470Q01105MEN | 245 | M49470X01155KAJ |
| 087 | M49470X01186KBN | 140 | M49470R01565MCN | 193 | M49470Q01125KEN | 246 | M49470X01155MAJ |
| 088 | M49470X01186MBN | 141 | M49470R01685KCN | 194 | M49470Q01125MEN | 247 | M49470X01185KAJ |
| 089 | M49470X01226KBN | 142 | M49470R01685MCN | 195 | M49470Q01155KEN | 248 | M49470X01185MAJ |
| 090 | M49470X01226MBN | 143 | M49470R01825KCN | 196 | M49470Q01155MEN | 249 | M49470X01225KAJ |
| 091 | M49470X01276KBN | 144 | M49470R01825MCN | 197 | M49470Q01185KEN | 250 | M49470X01225MAJ |
| 092 | M49470X01276MBN | 145 | M49470R01106KCN | 198 | M49470Q01185MEN | 251 | M49470X01275KAJ |
| 093 | M49470X01336KBN | 146 | M49470R01106MCN | 199 | M49470Q01275KEN | 252 | M49470X01275MAJ |
| 094 | M49470X01336MBN | 147 | M49470R01126KCN | 200 | M49470Q01275MEN | 253 | M49470X01335KAJ |
| 095 | M49470X01396KBN | 148 | M49470R01126MCN | 201 | M49470Q01335KEN | 254 | M49470X01335MAJ |
| 096 | M49470X01396MBN | 149 | M49470R01156KCN | 202 | M49470Q01335MEN | 255 | M49470X01395KAJ |
| 097 | M49470X01476KBN | 150 | M49470R01156MCN | 203 | M49470Q01395KEN | 256 | M49470X01395MAJ |
| 098 | M49470X01476MBN | 151 | M49470R01186KCN | 204 | M49470Q01395MEN | 257 | M49470X01475KAJ |
| 099 | M49470X01566KBN | 152 | M49470R01186MCN | 205 | M49470Q01475KEN | 258 | M49470X01475MAJ |
| 100 | M49470X01566MBN | 153 | M49470R01226KCN | 206 | M49470Q01475MEN | 259 | M49470X01565KAJ |
| 101 | M49470X01686KBN | 154 | M49470R01226MCN | 207 | M49470Q01565KEN | 260 | M49470X01565MAJ |
| 102 | M49470X01686MBN | 155 | M49470R01276KCN | 208 | M49470Q01565MEN | 261 | M49470X01685KAJ |
| 103 | M49470X01826KBN | 156 | M49470R01276MCN | 209 | M49470Q01825KEN | 262 | M49470X01685MAJ |
| 104 | M49470X01826MBN | 157 | M49470R01336KCN | 210 | M49470Q01825MEN | 263 | M49470X01825KAJ |
| 105 | M49470X01107KBN | 158 | M49470R01336MCN | 211 | M49470Q01106KEN | 264 | M49470X01825MAJ |
| 106 | M49470X01107MBN | 159 | M49470R01396KCN | 212 | M49470Q01106MEN | 265 | M49470X01106KAJ |
| 107 | M49470X01127KBN | 160 | M49470R01396MCN | 213 | M49470Q01126KEN | 266 | M49470X01106MAJ |
| 108 | M49470X01127MBN | 161 | M49470R01476KCN | 214 | M49470Q01126MEN | 267 | M49470X01126KAJ |
| 109 | M49470X01157KBN | 162 | M49470R01476MCN | 215 | M49470Q01186KEN | 268 | M49470X01126MAJ |
| 110 | M49470X01157MBN | 163 | M49470R01566KCN | 216 | M49470Q01186MEN | 269 | M49470X01156KAJ |
| 111 | M49470X01187KBN | 164 | M49470R01566MCN | 217 | M49470Q01276KEN | 270 | M49470X01156MAJ |
| 112 | M49470X01187MBN | 165 | M49470R01686KCN | 218 | M49470Q01276MEN | 271 | M49470X01186KAJ |
| 113 | M49470R01474KCN | 166 | M49470R01686MCN | 219 | M49470Q01336KEN | 272 | M49470X01186MAJ |
| 114 | M49470R01474MCN | 167 | M49470R01826KCN | 220 | M49470Q01336MEN | 273 | M49470X01226KAJ |
| 115 | M49470R01564KCN | 168 | M49470R01826MCN | 221 | M49470Q01396KEN | 274 | M49470X01226MAJ |
| 116 | M49470R01564MCN | 169 | M49470R01107KCN | 222 | M49470Q01396MEN | 275 | M49470X01276KAJ |
| 117 | M49470R01684KCN | 170 | M49470R01107MCN | 223 | M49470X01685KAN | 276 | M49470X01276MAJ |
| 118 | M49470R01684MCN | 171 | M49470R01127KCN | 224 | M49470X01685MAN | 277 | M49470X01336KAJ |
| 119 | M49470R01824KCN | 172 | M49470R01127MCN | 225 | M49470X01566KAN | 278 | M49470X01336MAJ |
| 120 | M49470R01824MCN | 173 | M49470Q01154KEN | 226 | M49470X01566MAN | 279 | M49470X01396KAJ |
| 121 | M49470R01105KCN | 174 | M49470Q01154MEN | 227 | M49470X01127KAN | 280 | M49470X01396MAJ |
| 122 | M49470R01105MCN | 175 | M49470Q01184KEN | 228 | M49470X01127MAN | 281 | M49470X01476KAJ |

| | | | |
|---|-------------|-----------------------|----------------|
| DEFENSE SUPPLY CENTER, COLUMBUS COLUMBUS, OHIO | SIZE | CODE IDENT NO. | DWG NO. |
| | A | 14933 | 87106 |
| | | REV U | PAGE 3 |

MIL-PRF-49470 VS 87106 Cross Reference Table - Continued.

| 87106- | MIL-PRF-49470/1 | 87106- | MIL-PRF-49470/1 | 87106- | MIL-PRF-49470/1 | 87106- | MIL-PRF-49470/1 |
|--------|-----------------|--------|-----------------|--------|-----------------|--------|-----------------|
| 282 | M49470X01476MAJ | 332 | M49470X01126MBJ | 382 | M49470R01335MCJ | 432 | M49470Q01394MEJ |
| 283 | M49470X01566KAJ | 333 | M49470X01156KBJ | 383 | M49470R01395KCJ | 433 | M49470Q01474KEJ |
| 284 | M49470X01566MAJ | 334 | M49470X01156MBJ | 384 | M49470R01395MCJ | 434 | M49470Q01474MEJ |
| 285 | M49470X01686KAJ | 335 | M49470X01186KBJ | 385 | M49470R01475KCJ | 435 | M49470Q01564KEJ |
| 286 | M49470X01686MAJ | 336 | M49470X01186MBJ | 386 | M49470R01475MCJ | 436 | M49470Q01564MEJ |
| 287 | M49470X01826KAJ | 337 | M49470X01226KBJ | 387 | M49470R01565KCJ | 437 | M49470Q01684KEJ |
| 288 | M49470X01826MAJ | 338 | M49470X01226MBJ | 388 | M49470R01565MCJ | 438 | M49470Q01684MEJ |
| 289 | M49470X01107KAJ | 339 | M49470X01276KBJ | 389 | M49470R01685KCJ | 439 | M49470Q01824KEJ |
| 290 | M49470X01107MAJ | 340 | M49470X01276MBJ | 390 | M49470R01685MCJ | 440 | M49470Q01824MEJ |
| 291 | M49470X01127KAJ | 341 | M49470X01336KBJ | 391 | M49470R01825KCJ | 441 | M49470Q01105KEJ |
| 292 | M49470X01127MAJ | 342 | M49470X01336MBJ | 392 | M49470R01825MCJ | 442 | M49470Q01105MEJ |
| 293 | M49470X01157KAJ | 343 | M49470X01396KBJ | 393 | M49470R01106KCJ | 443 | M49470Q01125KEJ |
| 294 | M49470X01157MAJ | 344 | M49470X01396MBJ | 394 | M49470R01106MCJ | 444 | M49470Q01125MEJ |
| 295 | M49470X01187KAJ | 345 | M49470X01476KBJ | 395 | M49470R01126KCJ | 445 | M49470Q01155KEJ |
| 296 | M49470X01187MAJ | 346 | M49470X01476MBJ | 396 | M49470R01126MCJ | 446 | M49470Q01155MEJ |
| 297 | M49470X01227KAJ | 347 | M49470X01566KBJ | 397 | M49470R01156KCJ | 447 | M49470Q01185KEJ |
| 298 | M49470X01227MAJ | 348 | M49470X01566MBJ | 398 | M49470R01156MCJ | 448 | M49470Q01185MEJ |
| 299 | M49470X01277KAJ | 349 | M49470X01686KBJ | 399 | M49470R01186KCJ | 449 | M49470Q01225KEJ |
| 300 | M49470X01277MAJ | 350 | M49470X01686MBJ | 400 | M49470R01186MCJ | 450 | M49470Q01225MEJ |
| 301 | M49470X01684KBJ | 351 | M49470X01826KBJ | 401 | M49470R01226KCJ | 451 | M49470Q01275KEJ |
| 302 | M49470X01684MBJ | 352 | M49470X01826MBJ | 402 | M49470R01226MCJ | 452 | M49470Q01275MEJ |
| 303 | M49470X01824KBJ | 353 | M49470X01107KBJ | 403 | M49470R01276KCJ | 453 | M49470Q01335KEJ |
| 304 | M49470X01824MBJ | 354 | M49470X01107MBJ | 404 | M49470R01276MCJ | 454 | M49470Q01335MEJ |
| 305 | M49470X01105KBJ | 355 | M49470X01127KBJ | 405 | M49470R01336KCJ | 455 | M49470Q01395KEJ |
| 306 | M49470X01105MBJ | 356 | M49470X01127MBJ | 406 | M49470R01336MCJ | 456 | M49470Q01395MEJ |
| 307 | M49470X01125KBJ | 357 | M49470X01157KBJ | 407 | M49470R01396KCJ | 457 | M49470Q01475KEJ |
| 308 | M49470X01125MBJ | 358 | M49470X01157MBJ | 408 | M49470R01396MCJ | 458 | M49470Q01475MEJ |
| 309 | M49470X01155KBJ | 359 | M49470X01187KBJ | 409 | M49470R01476KCJ | 459 | M49470Q01565KEJ |
| 310 | M49470X01155MBJ | 360 | M49470X01187MBJ | 410 | M49470R01476MCJ | 460 | M49470Q01565MEJ |
| 311 | M49470X01185KBJ | 361 | M49470R01474KCJ | 411 | M49470R01566KCJ | 461 | M49470Q01685KEJ |
| 312 | M49470X01185MBJ | 362 | M49470R01474MCJ | 412 | M49470R01566MCJ | 462 | M49470Q01685MEJ |
| 313 | M49470X01225KBJ | 363 | M49470R01564KCJ | 413 | M49470R01686KCJ | 463 | M49470Q01825KEJ |
| 314 | M49470X01225MBJ | 364 | M49470R01564MCJ | 414 | M49470R01686MCJ | 464 | M49470Q01825MEJ |
| 315 | M49470X01275KBJ | 365 | M49470R01684KCJ | 415 | M49470R01826KCJ | 465 | M49470Q01106KEJ |
| 316 | M49470X01275MBJ | 366 | M49470R01684MCJ | 416 | M49470R01826MCJ | 466 | M49470Q01106MEJ |
| 317 | M49470X01335KBJ | 367 | M49470R01824KCJ | 417 | M49470R01107KCJ | 467 | M49470Q01126KEJ |
| 318 | M49470X01335MBJ | 368 | M49470R01824MCJ | 418 | M49470R01107MCJ | 468 | M49470Q01126MEJ |
| 319 | M49470X01395KBJ | 369 | M49470R01105KCJ | 419 | M49470R01127KCJ | 469 | M49470Q01156KEJ |
| 320 | M49470X01395MBJ | 370 | M49470R01105MCJ | 420 | M49470R01127MCJ | 470 | M49470Q01156MEJ |
| 321 | M49470X01475KBJ | 371 | M49470R01125KCJ | 421 | M49470Q01154KEJ | 471 | M49470Q01186KEJ |
| 322 | M49470X01475MBJ | 372 | M49470R01125MCJ | 422 | M49470Q01154MEJ | 472 | M49470Q01186MEJ |
| 323 | M49470X01565KBJ | 373 | M49470R01155KCJ | 423 | M49470Q01184KEJ | 473 | M49470Q01226KEJ |
| 324 | M49470X01565MBJ | 374 | M49470R01155MCJ | 424 | M49470Q01184MEJ | 474 | M49470Q01226MEJ |
| 325 | M49470X01685KBJ | 375 | M49470R01185KCJ | 425 | M49470Q01224KEJ | 475 | M49470Q01276KEJ |
| 326 | M49470X01685MBJ | 376 | M49470R01185MCJ | 426 | M49470Q01224MEJ | 476 | M49470Q01276MEJ |
| 327 | M49470X01825KBJ | 377 | M49470R01225KCJ | 427 | M49470Q01274KEJ | 477 | M49470Q01336KEJ |
| 328 | M49470X01825MBJ | 378 | M49470R01225MCJ | 428 | M49470Q01274MEJ | 478 | M49470Q01336MEJ |
| 329 | M49470X01106KBJ | 379 | M49470R01275KCJ | 429 | M49470Q01334KEJ | 479 | M49470Q01396KEJ |
| 330 | M49470X01106MBJ | 380 | M49470R01275MCJ | 430 | M49470Q01334MEJ | 480 | M49470Q01396MEJ |
| 331 | M49470X01126KBJ | 381 | M49470R01335KCJ | 431 | M49470Q01394KEJ | | |

DEFENSE SUPPLY CENTER, COLUMBUS
COLUMBUS, OHIO

SIZE
A

CODE IDENT NO.
14933

DWG NO.
87106

REV U

PAGE 4

2. APPLICABLE DOCUMENTS

2.1 Government documents.

2.1.1 Specifications, standards, and handbooks. The following specifications, standards, and handbooks form a part of this document to the extent specified herein. Unless otherwise specified, the issues of these documents are those listed in the issue of the Department of Defense Index of Specifications and Standards (DoDISS) and supplement thereto, cited in the solicitation (see 6.2).

SPECIFICATIONS

DEPARTMENT OF DEFENSE

MIL-PRF-49470 - Capacitor, Fixed, Ceramic Dielectric, Switch Mode Power Supply (General Purpose and Temperature Stable), Standard Reliability and High Reliability, General Specification for.

STANDARDS

DEPARTMENT OF DEFENSE

MIL-STD-202 - Test Methods Standard Electronic and Electrical Component Parts.
 MIL-STD-1285 - Marking of Electrical and Electronic Parts.

(Unless otherwise indicated, copies of federal and military specifications, standards, and handbooks are available from the Document Automation and Production Service, Building 4D (DPM-DODSSP), 700 Robbins Avenue, Philadelphia, PA 19111-5094.)

2.2 Order of precedence. In the event of a conflict between the text of this document and the references cited herein, the text of this document takes precedence. Nothing in this document, however, supersedes applicable laws and regulations unless a specific exemption has been obtained.

3. REQUIREMENTS

3.1 Interface and physical dimensions. The interface and physical dimensions shall be as specified in MIL-PRF-49470 and herein (see figure 1 and table I).

3.2 Electrical characteristics.

3.2.1 Rated voltage. See table I.

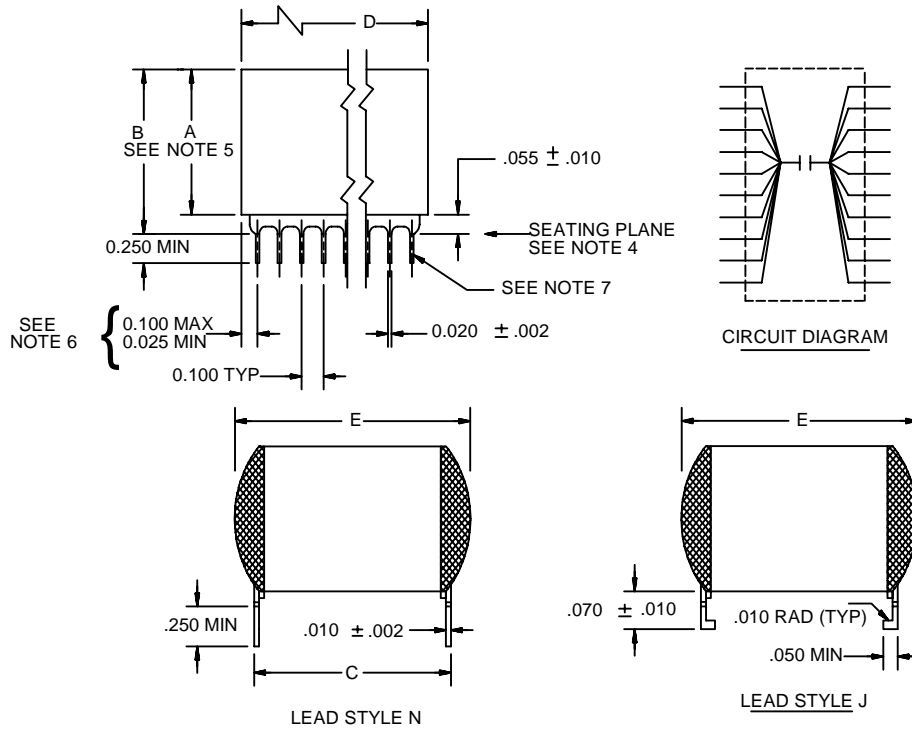
3.2.2 Dielectric. Ceramic.

3.2.3 Temperature coefficient.

| | <u>Bias = 0 volt</u> | <u>Bias = rated voltage</u> |
|----------------------|----------------------|-----------------------------|
| 50 V dc and 100 V dc | ±15 percent | +15, -25 percent |
| 200 V dc | ±15 percent | +15, -40 percent |
| 500 V dc | ±15 percent | +15, -50 percent |

| | | | |
|---|-------------------------|---------------------------------------|--------------------------------|
| DEFENSE SUPPLY CENTER, COLUMBUS COLUMBUS, OHIO | SIZE A | CODE IDENT NO. 14933 | DWG NO. 87106 |
| | | REV U | PAGE 5 |

| Inches | mm |
|--------|-------|
| .002 | 0.05 |
| .010 | 0.25 |
| .020 | 0.51 |
| .025 | 0.64 |
| .050 | 1.27 |
| .055 | 1.40 |
| .070 | 1.78 |
| .100 | 2.54 |
| .224 | 5.69 |
| .250 | 6.35 |
| .275 | 6.98 |
| .300 | 7.62 |
| .350 | 8.89 |
| .400 | 10.16 |
| .425 | 10.80 |
| .440 | 11.18 |
| .450 | 11.43 |
| .500 | 12.70 |
| .800 | 20.32 |
| .870 | 22.10 |
| .950 | 24.13 |
| 1.075 | 27.30 |
| 1.250 | 31.75 |
| 1.350 | 34.29 |
| 1.450 | 36.83 |
| 1.535 | 38.99 |
| 1.950 | 49.53 |
| 2.075 | 52.70 |



| Dimensions | | | | | |
|------------|----------|-------|-------|---------|--------------------------|
| Case code | C ± .025 | D | | E (max) | Number of leads per side |
| | | Min | Max | | |
| 1 | .450 | 1.950 | 2.075 | .500 | 20 |
| 2 | .800 | 1.450 | 1.535 | .870 | 15 |
| 3 | .450 | .950 | 1.075 | .500 | 10 |
| 4 | .400 | .350 | .425 | .440 | 4 |
| 5 | .250 | .224 | .275 | .300 | 3 |
| 6 | 1.250 | 1.950 | 2.075 | 1.350 | 20 |

NOTES:

1. Dimensions are in inches.
2. Metric equivalents are given for general information only.
3. Unless otherwise specified, tolerances are ±.010 inch (0.25 mm).
4. Lead frame configuration is shown as typical above the seating plane.
5. See table I for specific maximum A dimension. For maximum B dimension, add .065 inch (1.65 mm) to the appropriate A dimension. For all lead styles, the number of chips is determined by the capacitance and voltage rating.
6. For case code 5, dimensions shall be .100 inch (2.54 mm) maximum and .012 inch (0.30 mm) minimum.
7. Lead alignment within pin rows shall be within ±.005 inch (0.13 mm).

FIGURE 1. Dimensions and configuration.

| | | | |
|---|-------------|-----------------------|----------------|
| DEFENSE SUPPLY CENTER, COLUMBUS COLUMBUS, OHIO | SIZE | CODE IDENT NO. | DWG NO. |
| | A | 14933 | 87106 |
| | | REV U | PAGE 6 |

3.2.4 Capacitance. See table I. Capacitors shall be measured in accordance with method 305 of MIL-STD-202. The following details and exceptions shall apply: 1 kHz \pm 100 Hz at 1.0 V rms \pm 0.2 V rms (open circuit voltage).

3.2.5 Dissipation factor (+25°C). Dissipation factor shall be 2.5 percent maximum (measured under the same conditions as capacitance).

3.2.6 Insulation resistance.

- a. At +25°C, rated voltage: 100,000 megohms or 1,000 megohms- μ F, whichever is less.
- b. At +125°C, rated voltage: 10,000 megohms or 100 megohms- μ F, whichever is less.

3.2.7 Dielectric withstanding voltage. In accordance with MIL-PRF-49470.

3.2.8 Aging rate. Aging rate shall be -2.0 percent maximum for each decade-hour.

3.2.9 Capacitance tolerance. K = \pm 10 percent, M = \pm 20 percent.

3.3 Thermal shock and voltage conditioning. In accordance with MIL-PRF-49470.

3.4 Solderability. In accordance with MIL-PRF-49470.

3.5 Vibration, high frequency. In accordance with MIL-PRF-49470.

3.6 Immersion. In accordance with MIL-PRF-49470.

3.7 Shock, specified pulse. In accordance with MIL-PRF-49470.

3.8 Moisture resistance. In accordance with MIL-PRF-49470.

3.9 Resistance to soldering heat. In accordance with MIL-PRF-49470.

3.10 Resistance to solvents. In accordance with MIL-PRF-49470.

3.11 Life (at elevated ambient temperature). In accordance with MIL-PRF-49470.

3.12 Marking. Marking shall be in accordance with MIL-STD-1285, except the capacitors shall be marked with the PIN as specified in 1.2, the manufacturer's name or Commercial and Government Entity (CAGE) code and date lot code minimum. Case sizes 4 and 5 shall be marked with coded cap and tolerance minimum. Full marking shall be included on the package.

3.13 Recycled, recovered, or environmentally preferable materials. Recycled, recovered, or environmentally preferable materials should be used to the maximum extent possible provided that the material meets or exceeds the operational and maintenance requirements, and promotes economically advantageous life cycle costs.

3.14 Certificate of compliance. A certificate of compliance shall be required from manufacturers requesting to be a suggested source of supply.

3.15 Workmanship. Capacitors shall be processed in such a manner as to be uniform in quality when using 2X minimum to 4X maximum magnification. External leads shall not exhibit cuts, nicks, or scrapes exceeding 10 percent of the diagonal length of the leads. The surface of the lead may exhibit bare base metal on the edges and cut ends of the pins but not on the flat portion of the leads. These capacitor leads are not expected to be solderable above the seating plane.

| | | | |
|---|-------------------------|---------------------------------------|--------------------------------|
| DEFENSE SUPPLY CENTER, COLUMBUS COLUMBUS, OHIO | SIZE A | CODE IDENT NO. 14933 | DWG NO. 87106 |
| | | REV U | PAGE 7 |

TABLE I. Electrical characteristics.

| DSCC drawing PIN 87106- | Capacitance value μ F | Capacitance tolerance | Case code | Lead style | Maximum A dimension |
|-------------------------------|------------------------------|--------------------------|-----------|------------|------------------------|
| 50 V | | | | | |
| 1/ 001 | 1 | K | 5 | N | .120 |
| 1/ 002 | 1 | M | 5 | N | .120 |
| 1/ 241 | 1 | K | 5 | J | .120 |
| 1/ 242 | 1 | M | 5 | J | .120 |
| 1/ 003 | 1.2 | K | 5 | N | .120 |
| 1/ 004 | 1.2 | M | 5 | N | .120 |
| 1/ 243 | 1.2 | K | 5 | J | .120 |
| 1/ 244 | 1.2 | M | 5 | J | .120 |
| 1/ 005 | 1.5 | K | 5 | N | .240 |
| 1/ 006 | 1.5 | M | 5 | N | .240 |
| 1/ 245 | 1.5 | K | 5 | J | .240 |
| 1/ 246 | 1.5 | M | 5 | J | .240 |
| 1/ 007 | 1.8 | K | 5 | N | .240 |
| 1/ 008 | 1.8 | M | 5 | N | .240 |
| 1/ 247 | 1.8 | K | 5 | J | .240 |
| 1/ 248 | 1.8 | M | 5 | J | .240 |
| 1/ 009 | 2.2 | K | 5 | N | .240 |
| 1/ 010 | 2.2 | M | 5 | N | .240 |
| 1/ 249 | 2.2 | K | 5 | J | .240 |
| 1/ 250 | 2.2 | M | 5 | J | .240 |
| 1/ 011 | 2.7 | K | 5 | N | .360 |
| 1/ 012 | 2.7 | M | 5 | N | .360 |
| 1/ 251 | 2.7 | K | 5 | J | .360 |
| 1/ 252 | 2.7 | M | 5 | J | .360 |
| 1/ 013 | 3.3 | K | 5 | N | .360 |
| 1/ 014 | 3.3 | M | 5 | N | .360 |
| 1/ 253 | 3.3 | K | 5 | J | .360 |
| 1/ 254 | 3.3 | M | 5 | J | .360 |
| 1/ 015 | 3.9 | K | 5 | N | .480 |
| 1/ 016 | 3.9 | M | 5 | N | .480 |
| 1/ 255 | 3.9 | K | 5 | J | .480 |
| 1/ 256 | 3.9 | M | 5 | J | .480 |
| 1/ 017 | 4.7 | K | 5 | N | .480 |
| 1/ 018 | 4.7 | M | 5 | N | .480 |
| 1/ 257 | 4.7 | K | 5 | J | .480 |
| 1/ 258 | 4.7 | M | 5 | J | .480 |
| 1/ 019 | 5.6 | K | 5 | N | .650 |
| 1/ 020 | 5.6 | M | 5 | N | .650 |
| 1/ 259 | 5.6 | K | 5 | J | .650 |
| 1/ 260 | 5.6 | M | 5 | J | .650 |
| 1/ 223 | 6.8 | K | 4 | N | .360 |
| 1/ 224 | 6.8 | M | 4 | N | .360 |
| 1/ 261 | 6.8 | K | 4 | J | .360 |
| 1/ 262 | 6.8 | M | 4 | J | .360 |
| 1/ 021 | 8.2 | K | 4 | N | .360 |
| 1/ 022 | 8.2 | M | 4 | N | .360 |
| 1/ 263 | 8.2 | K | 4 | J | .360 |
| 1/ 264 | 8.2 | M | 4 | J | .360 |

See footnote at end of table.

| | | | |
|--|-------------|-----------------------|----------------|
| DEFENSE SUPPLY CENTER, COLUMBUS | SIZE | CODE IDENT NO. | DWG NO. |
| COLUMBUS, OHIO | A | 14933 | 87106 |
| | | REV U | PAGE 8 |

TABLE I. Electrical characteristics - Continued.

| DSCC drawing PIN 87106- | Capacitance value μ F | Capacitance tolerance | Case code | Lead style | Maximum A dimension |
|-------------------------------|------------------------------|--------------------------|-----------|------------|------------------------|
| 50 V | | | | | |
| 1/ 023 | 10 | K | 4 | N | .480 |
| 1/ 024 | 10 | M | 4 | N | .480 |
| 1/ 265 | 10 | K | 4 | J | .480 |
| 1/ 266 | 10 | M | 4 | J | .480 |
| 1/ 025 | 12 | K | 4 | N | .480 |
| 1/ 026 | 12 | M | 4 | N | .480 |
| 1/ 267 | 12 | K | 4 | J | .480 |
| 1/ 268 | 12 | M | 4 | J | .480 |
| 1/ 027 | 15 | K | 4 | N | .650 |
| 1/ 028 | 15 | M | 4 | N | .650 |
| 1/ 269 | 15 | K | 4 | J | .650 |
| 1/ 270 | 15 | M | 4 | J | .650 |
| 1/ 029 | 18 | K | 3 | N | .240 |
| 1/ 030 | 18 | M | 3 | N | .240 |
| 1/ 271 | 18 | K | 3 | J | .240 |
| 1/ 272 | 18 | M | 3 | J | .240 |
| 1/ 031 | 22 | K | 3 | N | .360 |
| 1/ 032 | 22 | M | 3 | N | .360 |
| 1/ 273 | 22 | K | 3 | J | .360 |
| 1/ 274 | 22 | M | 3 | J | .360 |
| 1/ 033 | 27 | K | 3 | N | .360 |
| 1/ 034 | 27 | M | 3 | N | .360 |
| 1/ 275 | 27 | K | 3 | J | .360 |
| 1/ 276 | 27 | M | 3 | J | .360 |
| 1/ 035 | 33 | K | 3 | N | .360 |
| 1/ 036 | 33 | M | 3 | N | .360 |
| 1/ 277 | 33 | K | 3 | J | .360 |
| 1/ 278 | 33 | M | 3 | J | .360 |
| 1/ 037 | 39 | K | 3 | N | .480 |
| 1/ 038 | 39 | M | 3 | N | .480 |
| 1/ 279 | 39 | K | 3 | J | .480 |
| 1/ 280 | 39 | M | 3 | J | .480 |
| 1/ 039 | 47 | K | 3 | N | .650 |
| 1/ 040 | 47 | M | 3 | N | .650 |
| 1/ 281 | 47 | K | 3 | J | .650 |
| 1/ 282 | 47 | M | 3 | J | .650 |
| 1/ 225 | 56 | K | 1 | N | .360 |
| 1/ 226 | 56 | M | 1 | N | .360 |
| 1/ 283 | 56 | K | 1 | J | .360 |
| 1/ 284 | 56 | M | 1 | J | .360 |
| 1/ 041 | 68 | K | 1 | N | .480 |
| 1/ 042 | 68 | M | 1 | N | .480 |
| 1/ 285 | 68 | K | 1 | J | .480 |
| 1/ 286 | 68 | M | 1 | J | .480 |
| 1/ 043 | 82 | K | 1 | N | .480 |
| 1/ 044 | 82 | M | 1 | N | .480 |
| 1/ 287 | 82 | K | 1 | J | .480 |
| 1/ 288 | 82 | M | 1 | J | .480 |

See footnote at end of table.

| | | | |
|--|-------------|-----------------------|----------------|
| DEFENSE SUPPLY CENTER, COLUMBUS | SIZE | CODE IDENT NO. | DWG NO. |
| COLUMBUS, OHIO | A | 14933 | 87106 |
| | | REV U | PAGE 9 |

TABLE I. Electrical characteristics - Continued.

| DSCC drawing PIN 87106- | Capacitance value μ F | Capacitance tolerance | Case code | Lead style | Maximum A dimension |
|-------------------------------|------------------------------|--------------------------|-----------|------------|------------------------|
| 50 V | | | | | |
| 1/ 045 | 100 | K | 1 | N | .650 |
| 1/ 046 | 100 | M | 1 | N | .650 |
| 1/ 289 | 100 | K | 1 | J | .650 |
| 1/ 290 | 100 | M | 1 | J | .650 |
| 1/ 227 | 120 | K | 2 | N | .480 |
| 1/ 228 | 120 | M | 2 | N | .480 |
| 1/ 291 | 120 | K | 2 | J | .480 |
| 1/ 292 | 120 | M | 2 | J | .480 |
| 1/ 047 | 150 | K | 2 | N | .650 |
| 1/ 048 | 150 | M | 2 | N | .650 |
| 1/ 293 | 150 | K | 2 | J | .650 |
| 1/ 294 | 150 | M | 2 | J | .650 |
| 1/ 049 | 180 | K | 6 | N | .480 |
| 1/ 050 | 180 | M | 6 | N | .480 |
| 1/ 295 | 180 | K | 6 | J | .480 |
| 1/ 296 | 180 | M | 6 | J | .480 |
| 1/ 051 | 220 | K | 6 | N | .480 |
| 1/ 052 | 220 | M | 6 | N | .480 |
| 1/ 297 | 220 | K | 6 | J | .480 |
| 1/ 298 | 220 | M | 6 | J | .480 |
| 1/ 053 | 270 | K | 6 | N | .650 |
| 1/ 054 | 270 | M | 6 | N | .650 |
| 1/ 299 | 270 | K | 6 | J | .650 |
| 1/ 300 | 270 | M | 6 | J | .650 |
| 100 V | | | | | |
| 1/ 055 | .68 | K | 5 | N | .120 |
| 1/ 056 | .68 | M | 5 | N | .120 |
| 1/ 301 | .68 | K | 5 | J | .120 |
| 1/ 302 | .68 | M | 5 | J | .120 |
| 1/ 057 | .82 | K | 5 | N | .240 |
| 1/ 058 | .82 | M | 5 | N | .240 |
| 1/ 303 | .82 | K | 5 | J | .240 |
| 1/ 304 | .82 | M | 5 | J | .240 |
| 1/ 059 | 1 | K | 5 | N | .240 |
| 1/ 060 | 1 | M | 5 | N | .240 |
| 1/ 305 | 1 | K | 5 | J | .240 |
| 1/ 306 | 1 | M | 5 | J | .240 |
| 1/ 061 | 1.2 | K | 5 | N | .240 |
| 1/ 062 | 1.2 | M | 5 | N | .240 |
| 1/ 307 | 1.2 | K | 5 | J | .240 |
| 1/ 308 | 1.2 | M | 5 | J | .240 |
| 1/ 063 | 1.5 | K | 5 | N | .360 |
| 1/ 064 | 1.5 | M | 5 | N | .360 |
| 1/ 309 | 1.5 | K | 5 | J | .360 |
| 1/ 310 | 1.5 | M | 5 | J | .360 |
| 1/ 065 | 1.8 | K | 5 | N | .360 |
| 1/ 066 | 1.8 | M | 5 | N | .360 |
| 1/ 311 | 1.8 | K | 5 | J | .360 |
| 1/ 312 | 1.8 | M | 5 | J | .360 |

See footnote at end of table.

| | | | |
|--|-------------|-----------------------|----------------|
| DEFENSE SUPPLY CENTER, COLUMBUS | SIZE | CODE IDENT NO. | DWG NO. |
| COLUMBUS, OHIO | A | 14933 | 87106 |
| | | REV U | PAGE 10 |

TABLE I. Electrical characteristics - Continued.

| DSCC drawing PIN 87106- | Capacitance value μ F | Capacitance tolerance | Case code | Lead style | Maximum A dimension |
|-------------------------------|------------------------------|--------------------------|-----------|------------|------------------------|
| 100 V | | | | | |
| 1/ 067 | 2.2 | K | 5 | N | .480 |
| 1/ 068 | 2.2 | M | 5 | N | .480 |
| 1/ 313 | 2.2 | K | 5 | J | .480 |
| 1/ 314 | 2.2 | M | 5 | J | .480 |
| 1/ 069 | 2.7 | K | 5 | N | .480 |
| 1/ 070 | 2.7 | M | 5 | N | .480 |
| 1/ 315 | 2.7 | K | 5 | J | .480 |
| 1/ 316 | 2.7 | M | 5 | J | .480 |
| 1/ 071 | 3.3 | K | 5 | N | .650 |
| 1/ 072 | 3.3 | M | 5 | N | .650 |
| 1/ 317 | 3.3 | K | 5 | J | .650 |
| 1/ 318 | 3.3 | M | 5 | J | .650 |
| 1/ 073 | 3.9 | K | 4 | N | .360 |
| 1/ 074 | 3.9 | M | 4 | N | .360 |
| 1/ 319 | 3.9 | K | 4 | J | .360 |
| 1/ 320 | 3.9 | M | 4 | J | .360 |
| 1/ 075 | 4.7 | K | 4 | N | .360 |
| 1/ 076 | 4.7 | M | 4 | N | .360 |
| 1/ 321 | 4.7 | K | 4 | J | .360 |
| 1/ 322 | 4.7 | M | 4 | J | .360 |
| 1/ 077 | 5.6 | K | 4 | N | .480 |
| 1/ 078 | 5.6 | M | 4 | N | .480 |
| 1/ 323 | 5.6 | K | 4 | J | .480 |
| 1/ 324 | 5.6 | M | 4 | J | .480 |
| 1/ 079 | 6.8 | K | 4 | N | .480 |
| 1/ 080 | 6.8 | M | 4 | N | .480 |
| 1/ 325 | 6.8 | K | 4 | J | .480 |
| 1/ 326 | 6.8 | M | 4 | J | .480 |
| 1/ 081 | 8.2 | K | 4 | N | .650 |
| 1/ 082 | 8.2 | M | 4 | N | .650 |
| 1/ 327 | 8.2 | K | 4 | J | .650 |
| 1/ 328 | 8.2 | M | 4 | J | .650 |
| 1/ 229 | 10 | K | 3 | N | .240 |
| 1/ 230 | 10 | M | 3 | N | .240 |
| 1/ 329 | 10 | K | 3 | J | .240 |
| 1/ 330 | 10 | M | 3 | J | .240 |
| 1/ 083 | 12 | K | 3 | N | .240 |
| 1/ 084 | 12 | M | 3 | N | .240 |
| 1/ 331 | 12 | K | 3 | J | .240 |
| 1/ 332 | 12 | M | 3 | J | .240 |
| 1/ 085 | 15 | K | 3 | N | .360 |
| 1/ 086 | 15 | M | 3 | N | .360 |
| 1/ 333 | 15 | K | 3 | J | .360 |
| 1/ 334 | 15 | M | 3 | J | .360 |
| 1/ 087 | 18 | K | 3 | N | .360 |
| 1/ 088 | 18 | M | 3 | N | .360 |
| 1/ 335 | 18 | K | 3 | J | .360 |
| 1/ 336 | 18 | M | 3 | J | .360 |

See footnote at end of table.

| | | | |
|--|-------------|-----------------------|----------------|
| DEFENSE SUPPLY CENTER, COLUMBUS | SIZE | CODE IDENT NO. | DWG NO. |
| COLUMBUS, OHIO | A | 14933 | 87106 |
| | | REV U | PAGE 11 |

TABLE I. Electrical characteristics - Continued.

| DSCC drawing PIN 87106- | Capacitance value μ F | Capacitance tolerance | Case code | Lead style | Maximum A dimension |
|-------------------------------|------------------------------|--------------------------|-----------|------------|------------------------|
| 100 V | | | | | |
| 1/ 089 | 22 | K | 3 | N | .480 |
| 1/ 090 | 22 | M | 3 | N | .480 |
| 1/ 337 | 22 | K | 3 | J | .480 |
| 1/ 338 | 22 | M | 3 | J | .480 |
| 1/ 091 | 27 | K | 3 | N | .650 |
| 1/ 092 | 27 | M | 3 | N | .650 |
| 1/ 339 | 27 | K | 3 | J | .650 |
| 1/ 340 | 27 | M | 3 | J | .650 |
| 1/ 093 | 33 | K | 1 | N | .360 |
| 1/ 094 | 33 | M | 1 | N | .360 |
| 1/ 341 | 33 | K | 1 | J | .360 |
| 1/ 342 | 33 | M | 1 | J | .360 |
| 1/ 095 | 39 | K | 1 | N | .480 |
| 1/ 096 | 39 | M | 1 | N | .480 |
| 1/ 343 | 39 | K | 1 | J | .480 |
| 1/ 344 | 39 | M | 1 | J | .480 |
| 1/ 097 | 47 | K | 1 | N | .480 |
| 1/ 098 | 47 | M | 1 | N | .480 |
| 1/ 345 | 47 | K | 1 | J | .480 |
| 1/ 346 | 47 | M | 1 | J | .480 |
| 1/ 099 | 56 | K | 1 | N | .650 |
| 1/ 100 | 56 | M | 1 | N | .650 |
| 1/ 347 | 56 | K | 1 | J | .650 |
| 1/ 348 | 56 | M | 1 | J | .650 |
| 1/ 101 | 68 | K | 2 | N | .480 |
| 1/ 102 | 68 | M | 2 | N | .480 |
| 1/ 349 | 68 | K | 2 | J | .480 |
| 1/ 350 | 68 | M | 2 | J | .480 |
| 1/ 103 | 82 | K | 2 | N | .650 |
| 1/ 104 | 82 | M | 2 | N | .650 |
| 1/ 351 | 82 | K | 2 | J | .650 |
| 1/ 352 | 82 | M | 2 | J | .650 |
| 1/ 105 | 100 | K | 6 | N | .360 |
| 1/ 106 | 100 | M | 6 | N | .360 |
| 1/ 353 | 100 | K | 6 | J | .360 |
| 1/ 354 | 100 | M | 6 | J | .360 |
| 1/ 107 | 120 | K | 6 | N | .360 |
| 1/ 108 | 120 | M | 6 | N | .360 |
| 1/ 355 | 120 | K | 6 | J | .360 |
| 1/ 356 | 120 | M | 6 | J | .360 |
| 1/ 109 | 150 | K | 6 | N | .480 |
| 1/ 110 | 150 | M | 6 | N | .480 |
| 1/ 357 | 150 | K | 6 | J | .480 |
| 1/ 358 | 150 | M | 6 | J | .480 |
| 1/ 111 | 180 | K | 6 | N | .650 |
| 1/ 112 | 180 | M | 6 | N | .650 |
| 1/ 359 | 180 | K | 6 | J | .650 |
| 1/ 360 | 180 | M | 6 | J | .650 |

See footnote at end of table.

| | | | |
|--|-------------|-----------------------|----------------|
| DEFENSE SUPPLY CENTER, COLUMBUS | SIZE | CODE IDENT NO. | DWG NO. |
| COLUMBUS, OHIO | A | 14933 | 87106 |
| | | REV U | PAGE 12 |

TABLE I. Electrical characteristics - Continued.

| DSCC drawing PIN 87106- | Capacitance value μ F | Capacitance tolerance | Case code | Lead style | Maximum A dimension |
|-------------------------------|------------------------------|--------------------------|-----------|------------|------------------------|
| 200 V | | | | | |
| 1/ 113 | .47 | K | 5 | N | .240 |
| 1/ 114 | .47 | M | 5 | N | .240 |
| 1/ 361 | .47 | K | 5 | J | .240 |
| 1/ 362 | .47 | M | 5 | J | .240 |
| 1/ 115 | .56 | K | 5 | N | .240 |
| 1/ 116 | .56 | M | 5 | N | .240 |
| 1/ 363 | .56 | K | 5 | J | .240 |
| 1/ 364 | .56 | M | 5 | J | .240 |
| 1/ 117 | .68 | K | 5 | N | .360 |
| 1/ 118 | .68 | M | 5 | N | .360 |
| 1/ 365 | .68 | K | 5 | J | .360 |
| 1/ 366 | .68 | M | 5 | J | .360 |
| 1/ 119 | .82 | K | 5 | N | .360 |
| 1/ 120 | .82 | M | 5 | N | .360 |
| 1/ 367 | .82 | K | 5 | J | .360 |
| 1/ 368 | .82 | M | 5 | J | .360 |
| 1/ 121 | 1 | K | 5 | N | .480 |
| 1/ 122 | 1 | M | 5 | N | .480 |
| 1/ 369 | 1 | K | 5 | J | .480 |
| 1/ 370 | 1 | M | 5 | J | .480 |
| 1/ 123 | 1.2 | K | 5 | N | .480 |
| 1/ 124 | 1.2 | M | 5 | N | .480 |
| 1/ 371 | 1.2 | K | 5 | J | .480 |
| 1/ 372 | 1.2 | M | 5 | J | .480 |
| 1/ 125 | 1.5 | K | 5 | N | .650 |
| 1/ 126 | 1.5 | M | 5 | N | .650 |
| 1/ 373 | 1.5 | K | 5 | J | .650 |
| 1/ 374 | 1.5 | M | 5 | J | .650 |
| 1/ 127 | 1.8 | K | 4 | N | .360 |
| 1/ 128 | 1.8 | M | 4 | N | .360 |
| 1/ 375 | 1.8 | K | 4 | J | .360 |
| 1/ 376 | 1.8 | M | 4 | J | .360 |
| 1/ 129 | 2.2 | K | 4 | N | .360 |
| 1/ 130 | 2.2 | M | 4 | N | .360 |
| 1/ 377 | 2.2 | K | 4 | J | .360 |
| 1/ 378 | 2.2 | M | 4 | J | .360 |
| 1/ 131 | 2.7 | K | 4 | N | .480 |
| 1/ 132 | 2.7 | M | 4 | N | .480 |
| 1/ 379 | 2.7 | K | 4 | J | .480 |
| 1/ 380 | 2.7 | M | 4 | J | .480 |
| 1/ 133 | 3.3 | K | 4 | N | .480 |
| 1/ 134 | 3.3 | M | 4 | N | .480 |
| 1/ 381 | 3.3 | K | 4 | J | .480 |
| 1/ 382 | 3.3 | M | 4 | J | .480 |
| 1/ 135 | 3.9 | K | 4 | N | .650 |
| 1/ 136 | 3.9 | M | 4 | N | .650 |
| 1/ 383 | 3.9 | K | 4 | J | .650 |
| 1/ 384 | 3.9 | M | 4 | J | .650 |

See footnote at end of table.

| | | | |
|--|-------------|-----------------------|----------------|
| DEFENSE SUPPLY CENTER, COLUMBUS | SIZE | CODE IDENT NO. | DWG NO. |
| COLUMBUS, OHIO | A | 14933 | 87106 |
| | | REV U | PAGE 13 |

TABLE I. Electrical characteristics - Continued.

| DSCC drawing PIN 87106- | Capacitance value μ F | Capacitance tolerance | Case code | Lead style | Maximum A dimension |
|-------------------------------|------------------------------|--------------------------|-----------|------------|------------------------|
| 200 V | | | | | |
| 1/ 137 | 4.7 | K | 3 | N | .240 |
| 1/ 138 | 4.7 | M | 3 | N | .240 |
| 1/ 385 | 4.7 | K | 3 | J | .240 |
| 1/ 386 | 4.7 | M | 3 | J | .240 |
| 1/ 139 | 5.6 | K | 3 | N | .240 |
| 1/ 140 | 5.6 | M | 3 | N | .240 |
| 1/ 387 | 5.6 | K | 3 | J | .240 |
| 1/ 388 | 5.6 | M | 3 | J | .240 |
| 1/ 141 | 6.8 | K | 3 | N | .360 |
| 1/ 142 | 6.8 | M | 3 | N | .360 |
| 1/ 389 | 6.8 | K | 3 | J | .360 |
| 1/ 390 | 6.8 | M | 3 | J | .360 |
| 1/ 143 | 8.2 | K | 3 | N | .360 |
| 1/ 144 | 8.2 | M | 3 | N | .360 |
| 1/ 391 | 8.2 | K | 3 | J | .360 |
| 1/ 392 | 8.2 | M | 3 | J | .360 |
| 1/ 145 | 10 | K | 3 | N | .480 |
| 1/ 146 | 10 | M | 3 | N | .480 |
| 1/ 393 | 10 | K | 3 | J | .480 |
| 1/ 394 | 10 | M | 3 | J | .480 |
| 1/ 147 | 12 | K | 3 | N | .650 |
| 1/ 148 | 12 | M | 3 | N | .650 |
| 1/ 395 | 12 | K | 3 | J | .650 |
| 1/ 396 | 12 | M | 3 | J | .650 |
| 1/ 149 | 15 | K | 1 | N | .360 |
| 1/ 150 | 15 | M | 1 | N | .360 |
| 1/ 397 | 15 | K | 1 | J | .360 |
| 1/ 398 | 15 | M | 1 | J | .360 |
| 1/ 151 | 18 | K | 1 | N | .480 |
| 1/ 152 | 18 | M | 1 | N | .480 |
| 1/ 399 | 18 | K | 1 | J | .480 |
| 1/ 400 | 18 | M | 1 | J | .480 |
| 1/ 153 | 22 | K | 1 | N | .650 |
| 1/ 154 | 22 | M | 1 | N | .650 |
| 1/ 401 | 22 | K | 1 | J | .650 |
| 1/ 402 | 22 | M | 1 | J | .650 |
| 1/ 155 | 27 | K | 1 | N | .650 |
| 1/ 156 | 27 | M | 1 | N | .650 |
| 1/ 403 | 27 | K | 1 | J | .650 |
| 1/ 404 | 27 | M | 1 | J | .650 |
| 1/ 157 | 33 | K | 2 | N | .480 |
| 1/ 158 | 33 | M | 2 | N | .480 |
| 1/ 405 | 33 | K | 2 | J | .480 |
| 1/ 406 | 33 | M | 2 | J | .480 |
| 1/ 159 | 39 | K | 2 | N | .650 |
| 1/ 160 | 39 | M | 2 | N | .650 |
| 1/ 407 | 39 | K | 2 | J | .650 |
| 1/ 408 | 39 | M | 2 | J | .650 |

See footnote at end of table.

| | | | |
|--|-------------|-----------------------|----------------|
| DEFENSE SUPPLY CENTER, COLUMBUS | SIZE | CODE IDENT NO. | DWG NO. |
| COLUMBUS, OHIO | A | 14933 | 87106 |
| | | REV U | PAGE 14 |

TABLE I. Electrical characteristics - Continued.

| DSCC drawing PIN 87106- | Capacitance value μ F | Capacitance tolerance | Case code | Lead style | Maximum A dimension |
|-------------------------------|------------------------------|--------------------------|-----------|------------|------------------------|
| 200 V | | | | | |
| 1/ 161 | 47 | K | 6 | N | .240 |
| 1/ 162 | 47 | M | 6 | N | .240 |
| 1/ 409 | 47 | K | 6 | J | .240 |
| 1/ 410 | 47 | M | 6 | J | .240 |
| 1/ 163 | 56 | K | 6 | N | .360 |
| 1/ 164 | 56 | M | 6 | N | .360 |
| 1/ 411 | 56 | K | 6 | J | .360 |
| 1/ 412 | 56 | M | 6 | J | .360 |
| 1/ 165 | 68 | K | 6 | N | .360 |
| 1/ 166 | 68 | M | 6 | N | .360 |
| 1/ 413 | 68 | K | 6 | J | .360 |
| 1/ 414 | 68 | M | 6 | J | .360 |
| 1/ 167 | 82 | K | 6 | N | .480 |
| 1/ 168 | 82 | M | 6 | N | .480 |
| 1/ 415 | 82 | K | 6 | J | .480 |
| 1/ 416 | 82 | M | 6 | J | .480 |
| 1/ 169 | 100 | K | 6 | N | .650 |
| 1/ 170 | 100 | M | 6 | N | .650 |
| 1/ 417 | 100 | K | 6 | J | .650 |
| 1/ 418 | 100 | M | 6 | J | .650 |
| 1/ 171 | 120 | K | 6 | N | .650 |
| 1/ 172 | 120 | M | 6 | N | .650 |
| 1/ 419 | 120 | K | 6 | J | .650 |
| 1/ 420 | 120 | M | 6 | J | .650 |
| 500 V | | | | | |
| 1/ 173 | .15 | K | 5 | N | .120 |
| 1/ 174 | .15 | M | 5 | N | .120 |
| 1/ 421 | .15 | K | 5 | J | .120 |
| 1/ 422 | .15 | M | 5 | J | .120 |
| 1/ 175 | .18 | K | 5 | N | .240 |
| 1/ 176 | .18 | M | 5 | N | .240 |
| 1/ 423 | .18 | K | 5 | J | .240 |
| 1/ 424 | .18 | M | 5 | J | .240 |
| 1/ 177 | .22 | K | 5 | N | .240 |
| 1/ 178 | .22 | M | 5 | N | .240 |
| 1/ 425 | .22 | K | 5 | J | .240 |
| 1/ 426 | .22 | M | 5 | J | .240 |
| 1/ 179 | .27 | K | 5 | N | .240 |
| 1/ 180 | .27 | M | 5 | N | .240 |
| 1/ 427 | .27 | K | 5 | J | .240 |
| 1/ 428 | .27 | M | 5 | J | .240 |
| 1/ 181 | .33 | K | 5 | N | .360 |
| 1/ 182 | .33 | M | 5 | N | .360 |
| 1/ 429 | .33 | K | 5 | J | .360 |
| 1/ 430 | .33 | M | 5 | J | .360 |
| 1/ 183 | .39 | K | 5 | N | .360 |
| 1/ 184 | .39 | M | 5 | N | .360 |
| 1/ 431 | .39 | K | 5 | J | .360 |
| 1/ 432 | .39 | M | 5 | J | .360 |

See footnote at end of table.

| | | | |
|--|-------------|-----------------------|----------------|
| DEFENSE SUPPLY CENTER, COLUMBUS | SIZE | CODE IDENT NO. | DWG NO. |
| COLUMBUS, OHIO | A | 14933 | 87106 |
| | | REV U | PAGE 15 |

TABLE I. Electrical characteristics - Continued.

| DSCC drawing PIN 87106- | Capacitance value μ F | Capacitance tolerance | Case code | Lead style | Maximum A dimension |
|-------------------------------|------------------------------|--------------------------|-----------|------------|------------------------|
| 500 V | | | | | |
| <u>1/</u> 185 | .47 | K | 5 | N | .360 |
| <u>1/</u> 186 | .47 | M | 5 | N | .360 |
| <u>1/</u> 433 | .47 | K | 5 | J | .360 |
| <u>1/</u> 434 | .47 | M | 5 | J | .360 |
| <u>1/</u> 187 | .56 | K | 5 | N | .480 |
| <u>1/</u> 188 | .56 | M | 5 | N | .480 |
| <u>1/</u> 435 | .56 | K | 5 | J | .480 |
| <u>1/</u> 436 | .56 | M | 5 | J | .480 |
| <u>1/</u> 189 | .68 | K | 5 | N | .650 |
| <u>1/</u> 190 | .68 | M | 5 | N | .650 |
| <u>1/</u> 437 | .68 | K | 5 | J | .650 |
| <u>1/</u> 438 | .68 | M | 5 | J | .650 |
| <u>1/</u> 231 | .82 | K | 4 | N | .360 |
| <u>1/</u> 232 | .82 | M | 4 | N | .360 |
| <u>1/</u> 439 | .82 | K | 4 | J | .360 |
| <u>1/</u> 440 | .82 | M | 4 | J | .360 |
| <u>1/</u> 191 | 1 | K | 4 | N | .360 |
| <u>1/</u> 192 | 1 | M | 4 | N | .360 |
| <u>1/</u> 441 | 1 | K | 4 | J | .360 |
| <u>1/</u> 442 | 1 | M | 4 | J | .360 |
| <u>1/</u> 193 | 1.2 | K | 4 | N | .360 |
| <u>1/</u> 194 | 1.2 | M | 4 | N | .360 |
| <u>1/</u> 443 | 1.2 | K | 4 | J | .360 |
| <u>1/</u> 444 | 1.2 | M | 4 | J | .360 |
| <u>1/</u> 195 | 1.5 | K | 4 | N | .480 |
| <u>1/</u> 196 | 1.5 | M | 4 | N | .480 |
| <u>1/</u> 445 | 1.5 | K | 4 | J | .480 |
| <u>1/</u> 446 | 1.5 | M | 4 | J | .480 |
| <u>1/</u> 197 | 1.8 | K | 4 | N | .650 |
| <u>1/</u> 198 | 1.8 | M | 4 | N | .650 |
| <u>1/</u> 447 | 1.8 | K | 4 | J | .650 |
| <u>1/</u> 448 | 1.8 | M | 4 | J | .650 |
| <u>1/</u> 233 | 2.2 | K | 3 | N | .240 |
| <u>1/</u> 234 | 2.2 | M | 3 | N | .240 |
| <u>1/</u> 449 | 2.2 | K | 3 | J | .240 |
| <u>1/</u> 450 | 2.2 | M | 3 | J | .240 |
| <u>1/</u> 199 | 2.7 | K | 3 | N | .360 |
| <u>1/</u> 200 | 2.7 | M | 3 | N | .360 |
| <u>1/</u> 451 | 2.7 | K | 3 | J | .360 |
| <u>1/</u> 452 | 2.7 | M | 3 | J | .360 |
| <u>1/</u> 201 | 3.3 | K | 3 | N | .360 |
| <u>1/</u> 202 | 3.3 | M | 3 | N | .360 |
| <u>1/</u> 453 | 3.3 | K | 3 | J | .360 |
| <u>1/</u> 454 | 3.3 | M | 3 | J | .360 |
| <u>1/</u> 203 | 3.9 | K | 3 | N | .360 |
| <u>1/</u> 204 | 3.9 | M | 3 | N | .360 |
| <u>1/</u> 455 | 3.9 | K | 3 | J | .360 |
| <u>1/</u> 456 | 3.9 | M | 3 | J | .360 |

See footnote at end of table.

| | | | |
|--|-------------|-----------------------|----------------|
| DEFENSE SUPPLY CENTER, COLUMBUS | SIZE | CODE IDENT NO. | DWG NO. |
| COLUMBUS, OHIO | A | 14933 | 87106 |
| | | REV U | PAGE 16 |

TABLE I. Electrical characteristics - Continued.

| DSCC drawing PIN 87106- | Capacitance value μ F | Capacitance tolerance | Case code | Lead style | Maximum A dimension |
|-------------------------------|------------------------------|--------------------------|-----------|------------|------------------------|
| 500 V | | | | | |
| 1/ 205 | 4.7 | K | 3 | N | .480 |
| 1/ 206 | 4.7 | M | 3 | N | .480 |
| 1/ 457 | 4.7 | K | 3 | J | .480 |
| 1/ 458 | 4.7 | M | 3 | J | .480 |
| 1/ 207 | 5.6 | K | 3 | N | .650 |
| 1/ 208 | 5.6 | M | 3 | N | .650 |
| 1/ 459 | 5.6 | K | 3 | J | .650 |
| 1/ 460 | 5.6 | M | 3 | J | .650 |
| 235 | 6.8 | K | 1 | N | .480 |
| 236 | 6.8 | M | 1 | N | .480 |
| 461 | 6.8 | K | 1 | J | .480 |
| 462 | 6.8 | M | 1 | J | .480 |
| 209 | 8.2 | K | 1 | N | .480 |
| 210 | 8.2 | M | 1 | N | .480 |
| 463 | 8.2 | K | 1 | J | .480 |
| 464 | 8.2 | M | 1 | J | .480 |
| 211 | 10 | K | 1 | N | .480 |
| 212 | 10 | M | 1 | N | .480 |
| 465 | 10 | K | 1 | J | .480 |
| 466 | 10 | M | 1 | J | .480 |
| 213 | 12 | K | 1 | N | .650 |
| 214 | 12 | M | 1 | N | .650 |
| 467 | 12 | K | 1 | J | .650 |
| 468 | 12 | M | 1 | J | .650 |
| 237 | 15 | K | 2 | N | .650 |
| 238 | 15 | M | 2 | N | .650 |
| 469 | 15 | K | 2 | J | .650 |
| 470 | 15 | M | 2 | J | .650 |
| 215 | 18 | K | 2 | N | .650 |
| 216 | 18 | M | 2 | N | .650 |
| 471 | 18 | K | 2 | J | .650 |
| 472 | 18 | M | 2 | J | .650 |
| 239 | 22 | K | 6 | N | .360 |
| 240 | 22 | M | 6 | N | .360 |
| 473 | 22 | K | 6 | J | .360 |
| 474 | 22 | M | 6 | J | .360 |
| 217 | 27 | K | 6 | N | .360 |
| 218 | 27 | M | 6 | N | .360 |
| 475 | 27 | K | 6 | J | .360 |
| 476 | 27 | M | 6 | J | .360 |
| 219 | 33 | K | 6 | N | .480 |
| 220 | 33 | M | 6 | N | .480 |
| 477 | 33 | K | 6 | J | .480 |
| 478 | 33 | M | 6 | J | .480 |
| 221 | 39 | K | 6 | N | .650 |
| 222 | 39 | M | 6 | N | .650 |
| 479 | 39 | K | 6 | J | .650 |
| 480 | 39 | M | 6 | J | .650 |

1/ This PIN is inactive for new design. See section 1 for MIL-PRF-49470 replacement information. This document will be cancelled when all 87106 PINs have a qualified source in MIL-PRF-49470.

| | | | |
|--|-------------|-----------------------|----------------|
| DEFENSE SUPPLY CENTER, COLUMBUS | SIZE | CODE IDENT NO. | DWG NO. |
| COLUMBUS, OHIO | A | 14933 | 87106 |
| | | REV U | PAGE 17 |

4. VERIFICATION

4.1 Sampling and inspection. Unless otherwise specified, sampling and inspection procedures shall be performed in accordance with MIL-PRF-49470.

4.2 Conformance inspection.

4.2.1 Inspection of product for delivery. Inspection of product for delivery shall consist of groups A and B inspections of this drawing (see tables II and III herein).

4.2.2 Certification. The acquiring activity, at its discretion, may accept a certificate of compliance with group B inspections in lieu of performing group B inspections (see 6.2f). See 6.1.3 for guidance.

TABLE II. Group A inspection.

| Inspection | Requirement paragraph of MIL-PRF-49470 | Test method paragraph of MIL-PRF-49470 | Sampling procedure |
|--|---|--|--------------------------|
| <u>Subgroup 1</u> Thermal shock and voltage conditioning <u>1/</u> | 3.9 | 4.8.5 | 100% inspection |
| <u>Subgroup 2</u> Visual and mechanical examination: Material Physical dimensions Interface requirements (other than physical dimensions) Marking <u>2/</u> Workmanship | 3.4 3.1 3.5 and 3.5.1 3.27 3.29 | 4.8.4 | 13 samples 0 failures |

1/ Post checks are required (see 3.9 of MIL-PRF-49470).

2/ Marking defects are based on visual examination only. Any subsequent electrical defects shall not be used as a basis for determining marking defects.

| | | | |
|---|-------------------------|---------------------------------------|--------------------------------|
| DEFENSE SUPPLY CENTER, COLUMBUS COLUMBUS, OHIO | SIZE A | CODE IDENT NO. 14933 | DWG NO. 87106 |
| | | REV U | PAGE 18 |

TABLE III. Group B inspection. 1/

| Inspection | Requirement paragraph of MIL-PRF-49470 | Test method paragraph of MIL-PRF-49470 | Number of sample units to be inspected | Number of defectives permitted 2/ | |
|--|--|--|--|-----------------------------------|------|
| <u>Subgroup 1</u> 3/ Temperature coefficient Resistance to solvents 5/ 6/ Immersion Terminal strength 5/ | 4/ 3.23 3.18 3.24 | 4/ 4.8.20 4.8.15 4.8.10 | 12 | 1 | 6/ 1 |
| <u>Subgroup 2</u> Resistance to soldering heat Moisture resistance | 3.20 3.21 | 4.8.17 4.8.18 | 12 | 1 | |
| <u>Subgroup 3</u> Marking legibility (laser marking only) | 3.27.1 | 4.8.4.1 | 6 | 1 | |
| <u>Subgroup 4</u> Solderability | 3.15 | 4.8.12 | 3 | 0 | |
| <u>Subgroup 5</u> Life | 3.26 | 4.8.22 | 5 minimum per case code | 0 | |

1/ Unless otherwise specified herein, when necessary, mounting of group B samples shall be at the discretion of the manufacturer.

2/ A sample unit having one or more defects shall be charged as a single defective.

3/ Order of tests is at discretion of manufacturer.

4/ See 3.2.3 of this drawing.

5/ Sample size shall be 3 pieces with zero defectives permitted.

6/ Total of one defect allowed for combination of subgroup 1, subgroup 2, and subgroup 3 inspections.

5. PACKAGING

5.1 Packaging. For acquisition purposes, the packaging requirements shall be as specified in the contract or order (see 6.2). When actual packaging of material is to be performed by DoD personnel, these personnel need to contact the responsible packaging activity to ascertain requisite packaging requirements. Packaging requirements are maintained by the Inventory Control Point's packaging activity within the Military Department or Defense Agency, or within the Military Department's System Command. Packaging data retrieval is available from the managing Military Department's or Defense Agency's automated packaging files, CD-ROM products, or by contacting the responsible packaging activity.

6. NOTES

(This section contains information of a general or explanatory nature which may be helpful, but is not mandatory.)

6.1 Intended use. These capacitors are primarily designed for use where a small physical size with comparatively large electrical capacitance and high insulation resistance is required. General purpose ceramic capacitors are not intended for frequency-determining or precision circuits but are suitable for use as by-pass, filter, and noncritical coupling elements in high-frequency circuits. All of these applications are of the type where dissipation factor is not critical and moderate changes due to temperature, voltage, and frequency variations do not affect the proper functioning of the circuit.

6.1.1 Precautionary note. Capacitors covered by this specification are very susceptible to thermal shock damage due to their large ceramic mass. Temperature profiles used should provide adequate temperature rise and cool-down time to prevent damage from thermal shock. The capacitors should be preheated. The preheat and cool down should not exceed 4°C per second. The maximum preheat temperature should be within 50°C of the solder bath temperature. Consult manufacturers for further recommendation.

| | | | |
|---|-------------------------|---------------------------------------|--------------------------------|
| DEFENSE SUPPLY CENTER, COLUMBUS COLUMBUS, OHIO | SIZE A | CODE IDENT NO. 14933 | DWG NO. 87106 |
| | | REV U | PAGE 19 |

6.1.2 Precautionary note. Capacitors covered by this specification have high mass and are susceptible to mechanical damage. Special mounting precaution may be necessary especially in high vibration environments. Consult manufacturers for recommendations.

6.1.3 Group B inspection guidance. The manufacturing complexity of the 480 parts on this drawing varies immensely. To determine whether to accept a certificate of compliance in lieu of performing group B inspections, appropriate data should be reviewed. Test data and/or reliability data from recent production lots consisting of parts with same case size, equal or greater capacitance, and equal or tighter tolerance should be reviewed.

6.2 Ordering data. The contract or purchase order should specify the following:

- a. Complete PIN (see 1.2).
- b. Requirements for delivery of one copy of the conformance inspection data or certificate of compliance that parts have passed conformance inspection with each shipment of parts by the manufacturer.
- c. Requirements for packaging and packing.
- d. Title, number, and date of the specification.
- e. Issue of DODISS to be cited in the solicitation, and if required, the specific issue of individual documents referenced (see 2.1).
- f. Whether the manufacturer performs the group B inspections, or provides certification of compliance with group B inspections.
- g. Requirements for notification of change of product to acquiring activity, if applicable.

6.3 Users of record. Coordination of this document for future revisions are coordinated only with the suggested sources of supply and the users of record of this document. Requests to be added as a recorded user of this drawing should be in writing to: DSCC-VAT, Post Office Box 3990, Columbus, OH 43216-5000 or by telephone (614) 692-0561 or DSN 850-0561.

6.4 Suggested sources of supply. Suggested sources of supply are listed herein. Additional sources will be added as they become available. For assistance in the use of this drawing, contact DSCC-VAT, Post Office Box 3990, Columbus, OH 43216-5000 or by telephone (614) 692-0561 or DSN 850-0561.

| | | | |
|---|-------------------|---------------------------------|--------------------------|
| DEFENSE SUPPLY CENTER, COLUMBUS COLUMBUS, OHIO | SIZE A | CODE IDENT NO. 14933 | DWG NO. 87106 |
| | | REV U | PAGE 20 |

TABLE IV. Similar vendor types.

| DSCC drawing PIN 87106- | Vendor A similar vendor type 1/ | Vendor B similar vendor type 1/ | Vendor C similar vendor type 1/ | Vendor D similar vendor type 1/ | Vendor E similar vendor type 1/ | Vendor F similar vendor type 1/ |
|-------------------------|---------------------------------|---------------------------------|---------------------------------|---------------------------------|---------------------------------|---------------------------------|
| 001 | SM055C105KHN120 | 500P05W105KN3H | UTC4197-001 | PCI1551-001 | SMP5E105KN050 | SM2225X105K500LNXH-1 |
| 002 | SM055C105MHN120 | 500P05W105MN3H | UTC4197-002 | PCI1551-002 | SMP5E105MN050 | SM2225X105M500LNXH-1 |
| 003 | SM055C125KHN120 | 500P05W125KN3H | UTC4197-003 | PCI1551-003 | SMP5E125KN050 | SM2225X125K500LNXH-1 |
| 004 | SM055C125MHN120 | 500P05W125MN3H | UTC4197-004 | PCI1551-004 | SMP5E125MN050 | SM2225X125M500LNXH-1 |
| 005 | SM055C155KHN240 | 500P25W155KN3H | UTC4197-005 | PCI1551-005 | SMP5E155KN050 | SM2225X155K500LNXH-2 |
| 006 | SM055C155MHN240 | 500P25W155MN3H | UTC4197-006 | PCI1551-006 | SMP5E155MN050 | SM2225X155M500LNXH-2 |
| 007 | SM055C185KHN240 | 500P25W185KN3H | UTC4197-007 | PCI1551-007 | SMP5E185KN050 | SM2225X185K500LNXH-2 |
| 008 | SM055C185MHN240 | 500P25W185MN3H | UTC4197-008 | PCI1551-008 | SMP5E185MN050 | SM2225X185M500LNXH-2 |
| 009 | SM055C225KHN240 | 500P25W225KN3H | UTC4197-009 | PCI1551-009 | SMP5E225KN050 | SM2225X225K500LNXH-2 |
| 010 | SM055C225MHN240 | 500P25W225MN3H | UTC4197-010 | PCI1551-010 | SMP5E225MN050 | SM2225X225M500LNXH-2 |
| 011 | SM055C275KHN360 | 500P35W275KN3H | UTC4197-011 | PCI1551-011 | SMP5E275KN050 | SM2225X275K500LNXH-3 |
| 012 | SM055C275MHN360 | 500P35W275MN3H | UTC4197-012 | PCI1551-012 | SMP5E275MN050 | SM2225X275M500LNXH-3 |
| 013 | SM055C335KHN360 | 500P35W335KN3H | UTC4197-013 | PCI1551-013 | SMP5E335KN050 | SM2225X335K500LNXH-3 |
| 014 | SM055C335MHN360 | 500P35W335MN3H | UTC4197-014 | PCI1551-014 | SMP5E335MN050 | SM2225X335M500LNXH-3 |
| 015 | SM055C395KHN480 | 500P45W395KN3H | UTC4197-015 | PCI1551-015 | SMP5E395KN050 | SM2225X395K500LNXH-4 |
| 016 | SM055C395MHN480 | 500P45W395MN3H | UTC4197-016 | PCI1551-016 | SMP5E395MN050 | SM2225X395M500LNXH-4 |
| 017 | SM055C475KHN480 | 500P45W475KN3H | UTC4197-017 | PCI1551-017 | SMP5E475KN050 | SM2225X475K500LNXH-4 |
| 018 | SM055C475MHN480 | 500P45W475MN3H | UTC4197-018 | PCI1551-018 | SMP5E475MN050 | SM2225X475M500LNXH-4 |
| 019 | SM055C565KHN650 | 500P55W565KN3H | UTC4197-019 | PCI1551-019 | SMP5E565KN050 | SM2225X565K500LNXH-5 |
| 020 | SM055C565MHN650 | 500P55W565MN3H | UTC4197-020 | PCI1551-020 | SMP5E565MN050 | SM2225X565M500LNXH-5 |
| 021 | SM045C825KHN360 | 500P34W825KN3H | UTC4197-021 | PCI1551-021 | SMP4E825KN050 | SM3640X825K500LNXH-3 |
| 022 | SM045C825MHN360 | 500P34W825MN3H | UTC4197-022 | PCI1551-022 | SMP4E825MN050 | SM3640X825M500LNXH-3 |
| 023 | SM045C106KHN480 | 500P44W106KN3H | UTC4197-023 | PCI1551-023 | SMP4E106KN050 | SM3640X106K500LNXH-4 |
| 024 | SM045C106MHN480 | 500P44W106MN3H | UTC4197-024 | PCI1551-024 | SMP4E106MN050 | SM3640X106M500LNXH-4 |
| 025 | SM045C126KHN480 | 500P44W126KN3H | UTC4197-025 | PCI1551-025 | SMP4E126KN050 | SM3640X126K500LNXH-4 |
| 026 | SM045C126MHN480 | 500P44W126MN3H | UTC4197-026 | PCI1551-026 | SMP4E126MN050 | SM3640X126M500LNXH-4 |
| 027 | SM045C156KHN650 | 500P54W156KN3H | UTC4197-027 | PCI1551-027 | SMP4E156KN050 | SM3640X156K500LNXH-5 |
| 028 | SM045C156MHN650 | 500P54W156MN3H | UTC4197-028 | PCI1551-028 | SMP4E156MN050 | SM3640X156M500LNXH-5 |
| 029 | SM035C186KHN240 | 500P23W186KN3H | UTC4197-029 | PCI1551-029 | SMP3E186KN050 | SM43100X186K500LNXH-2 |
| 030 | SM035C186MHN240 | 500P23W186MN3H | UTC4197-030 | PCI1551-030 | SMP3E186MN050 | SM43100X186M500LNXH-2 |
| 031 | SM035C226KHN360 | 500P33W226KN3H | UTC4197-031 | PCI1551-031 | SMP3E226KN050 | SM43100X226K500LNXH-3 |
| 032 | SM035C226MHN360 | 500P33W226MN3H | UTC4197-032 | PCI1551-032 | SMP3E226MN050 | SM43100X226M500LNXH-3 |
| 033 | SM035C276KHN360 | 500P33W276KN3H | UTC4197-033 | PCI1551-033 | SMP3E276KN050 | SM43100X276K500LNXH-3 |
| 034 | SM035C276MHN360 | 500P33W276MN3H | UTC4197-034 | PCI1551-034 | SMP3E276MN050 | SM43100X276M500LNXH-3 |
| 035 | SM035C336KHN360 | 500P33W336KN3H | UTC4197-035 | PCI1551-035 | SMP3E336KN050 | SM43100X336K500LNXH-3 |
| 036 | SM035C336MHN360 | 500P33W336MN3H | UTC4197-036 | PCI1551-036 | SMP3E336MN050 | SM43100X336M500LNXH-3 |
| 037 | SM035C396KHN480 | 500P43W396KN3H | UTC4197-037 | PCI1551-037 | SMP3E396KN050 | SM43100X396K500LNXH-4 |
| 038 | SM035C396MHN480 | 500P43W396MN3H | UTC4197-038 | PCI1551-038 | SMP3E396MN050 | SM43100X396M500LNXH-4 |
| 039 | SM035C476KHN650 | 500P53W476KN3H | UTC4197-039 | PCI1551-039 | SMP3E476KN050 | SM43100X476K500LNXH-5 |
| 040 | SM035C476MHN650 | 500P53W476MN3H | UTC4197-040 | PCI1551-040 | SMP3E476MN050 | SM43100X476M500LNXH-5 |
| 041 | SM015C686KHN480 | 500P41W686KN3H | UTC4197-041 | PCI1551-041 | SMP1E686KN050 | |
| 042 | SM015C686MHN480 | 500P41W686MN3H | UTC4197-042 | PCI1551-042 | SMP1E686MN050 | |
| 043 | SM015C826KHN480 | 500P41W826KN3H | UTC4197-043 | PCI1551-043 | SMP1E826KN050 | |
| 044 | SM015C826MHN480 | 500P41W826MN3H | UTC4197-044 | PCI1551-044 | SMP1E826MN050 | |
| 045 | SM015C107KHN650 | 500P51W107KN3H | UTC4197-045 | PCI1551-045 | SMP1E107KN050 | |
| 046 | SM015C107MHN650 | 500P51W107MN3H | UTC4197-046 | PCI1551-046 | SMP1E107MN050 | |
| 047 | SM025C157KHN650 | 500P52W157KN3H | | PCI1551-047 | SMP2E157KN050 | |
| 048 | SM025C157MHN650 | 500P52W157MN3H | | PCI1551-048 | SMP2E157MN050 | |
| 049 | SM065C187KHN480 | 500P46W187KN3H | | | SMP6E187KN050 | |
| 050 | SM065C187MHN480 | 500P46W187MN3H | | | SMP6E187MN050 | |
| 051 | SM065C227KHN480 | 500P46W227KN3H | | | SMP6E227KN050 | |
| 052 | SM065C227MHN480 | 500P46W227MN3H | | | SMP6E227MN050 | |
| 053 | SM065C277KHN650 | 500P56W277KN3H | | | SMP6E277KN050 | |
| 054 | SM065C277MHN650 | 500P56W277MN3H | | | SMP6E277MN050 | |

See footnote at end of table.

| | | | |
|--|-------------|-----------------------|----------------|
| DEFENSE SUPPLY CENTER, COLUMBUS | SIZE | CODE IDENT NO. | DWG NO. |
| COLUMBUS, OHIO | A | 14933 | 87106 |
| | | REV U | PAGE 21 |

TABLE IV. Similar vendor types - Continued.

| DSCC drawing PIN 87106- | Vendor A similar vendor type 1/ | Vendor B similar vendor type 1/ | Vendor C similar vendor type 1/ | Vendor D similar vendor type 1/ | Vendor E similar vendor type 1/ | Vendor F similar vendor type 1/ |
|-------------------------|---------------------------------|---------------------------------|---------------------------------|---------------------------------|---------------------------------|---------------------------------|
| 055 | SM051C684KHN120 | 101P05W684KN3H | UTC4197-055 | PCI1551-055 | SMP5E684KN100 | SM2225X684K101LNXH-1 |
| 056 | SM051C684MHN120 | 101P05W684MN3H | UTC4197-056 | PCI1551-056 | SMP5E684MN100 | SM2225X684M101LNXH-1 |
| 057 | SM051C824KHN240 | 101P25W824KN3H | UTC4197-057 | PCI1551-057 | SMP5E824KN100 | SM2225X824K101LNXH-2 |
| 058 | SM051C824MHN240 | 101P25W824MN3H | UTC4197-058 | PCI1551-058 | SMP5E824MN100 | SM2225X824M101LNXH-2 |
| 059 | SM051C105KHN240 | 101P25W105KN3H | UTC4197-059 | PCI1551-059 | SMP5E105KN100 | SM2225X105K101LNXH-2 |
| 060 | SM051C105MHN240 | 101P25W105MN3H | UTC4197-060 | PCI1551-060 | SMP5E105MN100 | SM2225X105M101LNXH-2 |
| 061 | SM051C125KHN240 | 101P25W125KN3H | UTC4197-061 | PCI1551-061 | SMP5E125KN100 | SM2225X125K101LNXH-2 |
| 062 | SM051C125MHN240 | 101P25W125MN3H | UTC4197-062 | PCI1551-062 | SMP5E125MN100 | SM2225X125M101LNXH-2 |
| 063 | SM051C155KHN360 | 101P35W155KN3H | UTC4197-063 | PCI1551-063 | SMP5E155KN100 | SM2225X155K101LNXH-3 |
| 064 | SM051C155MHN360 | 101P35W155MN3H | UTC4197-064 | PCI1551-064 | SMP5E155MN100 | SM2225X155M101LNXH-3 |
| 065 | SM051C185KHN360 | 101P35W185KN3H | UTC4197-065 | PCI1551-065 | SMP5E185KN100 | SM2225X185K101LNXH-3 |
| 066 | SM051C185MHN360 | 101P35W185MN3H | UTC4197-066 | PCI1551-066 | SMP5E185MN100 | SM2225X185M101LNXH-3 |
| 067 | SM051C225KHN480 | 101P45W225KN3H | UTC4197-067 | PCI1551-067 | SMP5E225KN100 | SM2225X225K101LNXH-4 |
| 068 | SM051C225MHN480 | 101P45W225MN3H | UTC4197-068 | PCI1551-068 | SMP5E225MN100 | SM2225X225M101LNXH-4 |
| 069 | SM051C275KHN480 | 101P45W275KN3H | UTC4197-069 | PCI1551-069 | SMP5E275KN100 | SM2225X275K101LNXH-4 |
| 070 | SM051C275MHN480 | 101P45W275MN3H | UTC4197-070 | PCI1551-070 | SMP5E275MN100 | SM2225X275M101LNXH-4 |
| 071 | SM051C335KHN650 | 101P55W335KN3H | UTC4197-071 | PCI1551-071 | SMP5E335KN100 | SM2225X335K101LNXH-5 |
| 072 | SM051C335MHN650 | 101P55W335MN3H | UTC4197-072 | PCI1551-072 | SMP5E335MN100 | SM2225X335M101LNXH-5 |
| 073 | SM041C395KHN360 | 101P34W395KN3H | UTC4197-073 | PCI1551-073 | SMP4E395KN100 | SM3640X395K101LNXH-3 |
| 074 | SM041C395MHN360 | 101P34W395MN3H | UTC4197-074 | PCI1551-074 | SMP4E395MN100 | SM3640X395M101LNXH-3 |
| 075 | SM041C475KHN360 | 101P34W475KN3H | UTC4197-075 | PCI1551-075 | SMP4E475KN100 | SM3640X475K101LNXH-3 |
| 076 | SM041C475MHN360 | 101P34W475MN3H | UTC4197-076 | PCI1551-076 | SMP4E475MN100 | SM3640X475M101LNXH-3 |
| 077 | SM041C565KHN480 | 101P44W565KN3H | UTC4197-077 | PCI1551-077 | SMP4E565KN100 | SM3640X565K101LNXH-4 |
| 078 | SM041C565MHN480 | 101P44W565MN3H | UTC4197-078 | PCI1551-078 | SMP4E565MN100 | SM3640X565M101LNXH-4 |
| 079 | SM041C685KHN480 | 101P44W685KN3H | UTC4197-079 | PCI1551-079 | SMP4E685KN100 | SM3640X685K101LNXH-4 |
| 080 | SM041C685MHN480 | 101P44W685MN3H | UTC4197-080 | PCI1551-080 | SMP4E685MN100 | SM3640X685M101LNXH-4 |
| 081 | SM041C825KHN650 | 101P54W825KN3H | UTC4197-081 | PCI1551-081 | SMP4E825KN100 | SM3640X825K101LNXH-5 |
| 082 | SM041C825MHN650 | 101P54W825MN3H | UTC4197-082 | PCI1551-082 | SMP4E825MN100 | SM3640X825M101LNXH-5 |
| 083 | SM031C126KHN240 | 101P23W126KN3H | UTC4197-083 | PCI1551-083 | SMP3E126KN100 | SM43100X126K101LNXH-2 |
| 084 | SM031C126MHN240 | 101P23W126MN3H | UTC4197-084 | PCI1551-084 | SMP3E126MN100 | SM43100X126M101LNXH-2 |
| 085 | SM031C156KHN360 | 101P33W156KN3H | UTC4197-085 | PCI1551-085 | SMP3E156KN100 | SM43100X156K101LNXH-3 |
| 086 | SM031C156MHN360 | 101P33W156MN3H | UTC4197-086 | PCI1551-086 | SMP3E156MN100 | SM43100X156M101LNXH-3 |
| 087 | SM031C186KHN360 | 101P33W186KN3H | UTC4197-087 | PCI1551-087 | SMP3E186KN100 | SM43100X186K101LNXH-3 |
| 088 | SM031C186MHN360 | 101P33W186MN3H | UTC4197-088 | PCI1551-088 | SMP3E186MN100 | SM43100X186M101LNXH-3 |
| 089 | SM031C226KHN480 | 101P43W226KN3H | UTC4197-089 | PCI1551-089 | SMP3E226KN100 | SM43100X226K101LNXH-4 |
| 090 | SM031C226MHN480 | 101P43W226MN3H | UTC4197-090 | PCI1551-090 | SMP3E226MN100 | SM43100X226M101LNXH-4 |
| 091 | SM031C276KHN650 | 101P53W276KN3H | UTC4197-091 | PCI1551-091 | SMP3E276KN100 | SM43100X276K101LNXH-5 |
| 092 | SM031C276MHN650 | 101P53W276MN3H | UTC4197-092 | PCI1551-092 | SMP3E276MN100 | SM43100X276M101LNXH-5 |
| 093 | SM011C336KHN360 | 101P31W336KN3H | UTC4197-093 | PCI1551-093 | SMP1E336KN100 | |
| 094 | SM011C336MHN360 | 101P31W336MN3H | UTC4197-094 | PCI1551-094 | SMP1E336MN100 | |
| 095 | SM011C396KHN480 | 101P41W396KN3H | UTC4197-095 | PCI1551-095 | SMP1E396KN100 | |
| 096 | SM011C396MHN480 | 101P41W396MN3H | UTC4197-096 | PCI1551-096 | SMP1E396MN100 | |
| 097 | SM011C476KHN480 | 101P41W476KN3H | UTC4197-097 | PCI1551-097 | SMP1E476KN100 | |
| 098 | SM011C476MHN480 | 101P41W476MN3H | UTC4197-098 | PCI1551-098 | SMP1E476MN100 | |
| 099 | SM011C566KHN650 | 101P51W566KN3H | UTC4197-099 | PCI1551-099 | SMP1E566KN100 | |
| 100 | SM011C566MHN650 | 101P51W566MN3H | UTC4197-100 | PCI1551-100 | SMP1E566MN100 | |
| 101 | SM021C686KHN480 | 101P42W686KN3H | UTC4197-101 | PCI1551-101 | SMP2E686KN100 | |
| 102 | SM021C686MHN480 | 101P42W686MN3H | UTC4197-102 | PCI1551-102 | SMP2E686MN100 | |
| 103 | SM021C826KHN650 | 101P52W826KN3H | UTC4197-103 | PCI1551-103 | SMP2E826KN100 | |
| 104 | SM021C826MHN650 | 101P52W826MN3H | UTC4197-104 | PCI1551-104 | SMP2E826MN100 | |
| 105 | SM061C107KHN360 | 101P36W107KN3H | UTC4197-105 | | SMP6E107KN100 | |
| 106 | SM061C107MHN360 | 101P36W107MN3H | UTC4197-106 | | SMP6E107MN100 | |
| 107 | SM061C127KHN360 | 101P36W127KN3H | UTC4197-107 | | SMP6E127KN100 | |
| 108 | SM061C127MHN360 | 101P36W127MN3H | UTC4197-108 | | SMP6E127MN100 | |

See footnote at end of table.

| | | | |
|--|-------------|-----------------------|----------------|
| DEFENSE SUPPLY CENTER, COLUMBUS | SIZE | CODE IDENT NO. | DWG NO. |
| COLUMBUS, OHIO | A | 14933 | 87106 |
| | | REV U | PAGE 22 |

TABLE IV. Similar vendor types - Continued.

| DSCC drawing PIN 87106- | Vendor A similar vendor type 1/ | Vendor B similar vendor type 1/ | Vendor C similar vendor type 1/ | Vendor D similar vendor type 1/ | Vendor E similar vendor type 1/ | Vendor F similar vendor type 1/ |
|-------------------------|---------------------------------|---------------------------------|---------------------------------|---------------------------------|---------------------------------|---------------------------------|
| 109 | SM061C157KHN480 | 101P46W157KN3H | UTC4197-109 | | SMP6E157KN100 | |
| 110 | SM061C157MHN480 | 101P46W157MN3H | UTC4197-110 | | SMP6E157MN100 | |
| 111 | SM061C187KHN650 | 101P56W187KN3H | UTC4197-111 | | SMP6E187KN100 | |
| 112 | SM061C187MHN650 | 101P56W187MN3H | UTC4197-112 | | SMP6E187MN100 | |
| 113 | SM052C474KHN240 | 201P25W474KN3H | UTC4197-113 | PCI1551-113 | SMP5E474KN200 | SM2225T474K201LNXH-2 |
| 114 | SM052C474MHN240 | 201P25W474MN3H | UTC4197-114 | PCI1551-114 | SMP5E474MN200 | SM2225T474M201LNXH-2 |
| 115 | SM052C564KHN240 | 201P25W564KN3H | UTC4197-115 | PCI1551-115 | SMP5E564KN200 | SM2225T564K201LNXH-2 |
| 116 | SM052C564MHN240 | 201P25W564MN3H | UTC4197-116 | PCI1551-116 | SMP5E564MN200 | SM2225T564M201LNXH-2 |
| 117 | SM052C684KHN360 | 201P35W684KN3H | UTC4197-117 | PCI1551-117 | SMP5E684KN200 | SM2225T684K201LNXH-3 |
| 118 | SM052C684MHN360 | 201P35W684MN3H | UTC4197-118 | PCI1551-118 | SMP5E684MN200 | SM2225T684M201LNXH-3 |
| 119 | SM052C824KHN360 | 201P35W824KN3H | UTC4197-119 | PCI1551-119 | SMP5E824KN200 | SM2225T824K201LNXH-3 |
| 120 | SM052C824MHN360 | 201P35W824MN3H | UTC4197-120 | PCI1551-120 | SMP5E824MN200 | SM2225T824M201LNXH-3 |
| 121 | SM052C105KHN480 | 201P45W105KN3H | UTC4197-121 | PCI1551-121 | SMP5E105KN200 | SM2225T105K201LNXH-4 |
| 122 | SM052C105MHN480 | 201P45W105MN3H | UTC4197-122 | PCI1551-122 | SMP5E105MN200 | SM2225T105M201LNXH-4 |
| 123 | SM052C125KHN480 | 201P45W125KN3H | UTC4197-123 | PCI1551-123 | SMP5E125KN200 | SM2225T125K201LNXH-4 |
| 124 | SM052C125MHN480 | 201P45W125MN3H | UTC4197-124 | PCI1551-124 | SMP5E125MN200 | SM2225T125M201LNXH-4 |
| 125 | SM052C155KHN650 | 201P55W155KN3H | UTC4197-125 | PCI1551-125 | SMP5E155KN200 | SM2225T155K201LNXH-5 |
| 126 | SM052C155MHN650 | 201P55W155MN3H | UTC4197-126 | PCI1551-126 | SMP5E155MN200 | SM2225T155M201LNXH-5 |
| 127 | SM042C185KHN360 | 201P34W185KN3H | UTC4197-127 | PCI1551-127 | SMP4E185KN200 | SM3640T185K201LNXH-3 |
| 128 | SM042C185MHN360 | 201P34W185MN3H | UTC4197-128 | PCI1551-128 | SMP4E185MN200 | SM3640T185M201LNXH-3 |
| 129 | SM042C225KHN360 | 201P34W225KN3H | UTC4197-129 | PCI1551-129 | SMP4E225KN200 | SM3640T225K201LNXH-3 |
| 130 | SM042C225MHN360 | 201P34W225MN3H | UTC4197-130 | PCI1551-130 | SMP4E225MN200 | SM3640T225M201LNXH-3 |
| 131 | SM042C275KHN480 | 201P44W275KN3H | UTC4197-131 | PCI1551-131 | SMP4E275KN200 | SM3640T275K201LNXH-4 |
| 132 | SM042C275MHN480 | 201P44W275MN3H | UTC4197-132 | PCI1551-132 | SMP4E275MN200 | SM3640T275M201LNXH-4 |
| 133 | SM042C335KHN480 | 201P44W335KN3H | UTC4197-133 | PCI1551-133 | SMP4E335KN200 | SM3640T335K201LNXH-4 |
| 134 | SM042C335MHN480 | 201P44W335MN3H | UTC4197-134 | PCI1551-134 | SMP4E335MN200 | SM3640T335M201LNXH-4 |
| 135 | SM042C395KHN650 | 201P54W395KN3H | UTC4197-135 | PCI1551-135 | SMP4E395KN200 | SM3640T395K201LNXH-5 |
| 136 | SM042C395MHN650 | 201P54W395MN3H | UTC4197-136 | PCI1551-136 | SMP4E395MN200 | SM3640T395M201LNXH-5 |
| 137 | SM032C475KHN240 | 201P23W475KN3H | UTC4197-137 | PCI1551-137 | SMP3E475KN200 | SM43100T475K201LNXH-2 |
| 138 | SM032C475MHN240 | 201P23W475MN3H | UTC4197-138 | PCI1551-138 | SMP3E475MN200 | SM43100T475M201LNXH-2 |
| 139 | SM032C565KHN240 | 201P23W565KN3H | UTC4197-139 | PCI1551-139 | SMP3E565KN200 | SM43100T565K201LNXH-2 |
| 140 | SM032C565MHN240 | 201P23W565MN3H | UTC4197-140 | PCI1551-140 | SMP3E565MN200 | SM43100T565M201LNXH-2 |
| 141 | SM032C685KHN360 | 201P33W685KN3H | UTC4197-141 | PCI1551-141 | SMP3E685KN200 | SM43100T685K201LNXH-3 |
| 142 | SM032C685MHN360 | 201P33W685MN3H | UTC4197-142 | PCI1551-142 | SMP3E685MN200 | SM43100T685M201LNXH-3 |
| 143 | SM032C825KHN360 | 201P33W825KN3H | UTC4197-143 | PCI1551-143 | SMP3E825KN200 | SM43100T825K201LNXH-3 |
| 144 | SM032C825MHN360 | 201P33W825MN3H | UTC4197-144 | PCI1551-144 | SMP3E825MN200 | SM43100T825M201LNXH-3 |
| 145 | SM032C106KHN480 | 201P43W106KN3H | UTC4197-145 | PCI1551-145 | SMP3E106KN200 | SM43100T106K201LNXH-4 |
| 146 | SM032C106MHN480 | 201P43W106MN3H | UTC4197-146 | PCI1551-146 | SMP3E106MN200 | SM43100T106M201LNXH-4 |
| 147 | SM032C126KHN650 | 201P53W126KN3H | UTC4197-147 | PCI1551-147 | SMP3E126KN200 | SM43100T126K201LNXH-5 |
| 148 | SM032C126MHN650 | 201P53W126MN3H | UTC4197-148 | PCI1551-148 | SMP3E126MN200 | SM43100T126M201LNXH-5 |
| 149 | SM012C156KHN360 | 201P31W156KN3H | UTC4197-149 | PCI1551-149 | SMP1E156KN200 | |
| 150 | SM012C156MHN360 | 201P31W156MN3H | UTC4197-150 | PCI1551-150 | SMP1E156MN200 | |
| 151 | SM012C186KHN480 | 201P41W186KN3H | UTC4197-151 | PCI1551-151 | SMP1E186KN200 | |
| 152 | SM012C186MHN480 | 201P41W186MN3H | UTC4197-152 | PCI1551-152 | SMP1E186MN200 | |
| 153 | SM012C226KHN650 | 201P51W226KN3H | UTC4197-153 | PCI1551-153 | SMP1E226KN200 | |
| 154 | SM012C226MHN650 | 201P51W226MN3H | UTC4197-154 | PCI1551-154 | SMP1E226MN200 | |
| 155 | SM012C276KHN650 | 201P51W276KN3H | UTC4197-155 | PCI1551-155 | SMP1E276KN200 | |
| 156 | SM012C276MHN650 | 201P51W276MN3H | UTC4197-156 | PCI1551-156 | SMP1E276MN200 | |
| 157 | SM022C336KHN480 | 201P42W336KN3H | UTC4197-157 | PCI1551-157 | SMP2E336KN200 | |
| 158 | SM022C336MHN480 | 201P42W336MN3H | UTC4197-158 | PCI1551-158 | SMP2E336MN200 | |
| 159 | SM022C396KHN650 | 201P52W396KN3H | UTC4197-159 | PCI1551-159 | SMP2E396KN200 | |
| 160 | SM022C396MHN650 | 201P52W396MN3H | UTC4197-160 | PCI1551-160 | SMP2E396MN200 | |
| 161 | SM062C476KHN240 | 201P26W476KN3H | UTC4197-161 | | SMP6E476KN200 | |
| 162 | SM062C476MHN240 | 201P26W476MN3H | UTC4197-162 | | SMP6E476MN200 | |

See footnote at end of table.

| | | | |
|--|-------------|-----------------------|----------------|
| DEFENSE SUPPLY CENTER, COLUMBUS | SIZE | CODE IDENT NO. | DWG NO. |
| COLUMBUS, OHIO | A | 14933 | 87106 |
| | | REV U | PAGE 23 |

TABLE IV. Similar vendor types - Continued.

| DSCC drawing PIN 87106- | Vendor A similar vendor type <u>1/</u> | Vendor B similar vendor type <u>1/</u> | Vendor C similar vendor type <u>1/</u> | Vendor D similar vendor type <u>1/</u> | Vendor E similar vendor type <u>1/</u> | Vendor F similar vendor type <u>1/</u> |
|-------------------------|--|--|--|--|--|--|
| 163 | SM062C566KHN360 | 201P36W566KN3H | UTC4197-163 | | SMP6E566KN200 | |
| 164 | SM062C566MHN360 | 201P36W566MN3H | UTC4197-164 | | SMP6E566MN200 | |
| 165 | SM062C686KHN360 | 201P36W686KN3H | UTC4197-165 | | SMP6E686KN200 | |
| 166 | SM062C686MHN360 | 201P36W686MN3H | UTC4197-166 | | SMP6E686MN200 | |
| 167 | SM062C826KHN480 | 201P46W826KN3H | UTC4197-167 | | SMP6E826KN200 | |
| 168 | SM062C826MHN480 | 201P46W826MN3H | UTC4197-168 | | SMP6E826MN200 | |
| 169 | SM062C107KHN650 | 201P56W107KN3H | UTC4197-169 | | SMP6E107KN200 | |
| 170 | SM062C107MHN650 | 201P56W107MN3H | UTC4197-170 | | SMP6E107MN200 | |
| 171 | SM062C127KHN650 | 201P56W127KN3H | UTC4197-171 | | SMP6E127KN200 | |
| 172 | SM062C127MHN650 | 201P56W127MN3H | UTC4197-172 | | SMP6E127MN200 | |
| 173 | SM057C154KHN120 | 501P05W154KN3H | UTC4197-173 | PCI1551-173 | SMP5E154KN200 | SM2225U154K501LNXH-1 |
| 174 | SM057C154MHN120 | 501P05W154MN3H | UTC4197-174 | PCI1551-174 | SMP5E154MN200 | SM2225U154M501LNXH-1 |
| 175 | SM057C184KHN240 | 501P25W184KN3H | UTC4197-175 | PCI1551-175 | SMP5E184KN200 | SM2225U184K501LNXH-2 |
| 176 | SM057C184MHN240 | 501P25W184MN3H | UTC4197-176 | PCI1551-176 | SMP5E184MN200 | SM2225U184M501LNXH-2 |
| 177 | SM057C224KHN240 | 501P25W224KN3H | UTC4197-177 | PCI1551-177 | SMP5E224KN200 | SM2225U224K501LNXH-2 |
| 178 | SM057C224MHN240 | 501P25W224MN3H | UTC4197-178 | PCI1551-178 | SMP5E224MN200 | SM2225U224M501LNXH-2 |
| 179 | SM057C274KHN240 | 501P25W274KN3H | UTC4197-179 | PCI1551-179 | SMP5E274KN200 | SM2225U274K501LNXH-2 |
| 180 | SM057C274MHN240 | 501P25W274MN3H | UTC4197-180 | PCI1551-180 | SMP5E274MN200 | SM2225U274M501LNXH-2 |
| 181 | SM057C334KHN360 | 501P35W334KN3H | UTC4197-181 | PCI1551-181 | SMP5E334KN200 | SM2225U334K501LNXH-3 |
| 182 | SM057C334MHN360 | 501P35W334MN3H | UTC4197-182 | PCI1551-182 | SMP5E334MN200 | SM2225U334M501LNXH-3 |
| 183 | SM057C394KHN360 | 501P35W394KN3H | UTC4197-183 | PCI1551-183 | SMP5E394KN200 | SM2225U394K501LNXH-3 |
| 184 | SM057C394MHN360 | 501P35W394MN3H | UTC4197-184 | PCI1551-184 | SMP5E394MN200 | SM2225U394M501LNXH-3 |
| 185 | SM057C474KHN360 | 501P35W474KN3H | UTC4197-185 | PCI1551-185 | SMP5E474KN500 | SM2225U474K501LNXH-3 |
| 186 | SM057C474MHN360 | 501P35W474MN3H | UTC4197-186 | PCI1551-186 | SMP5E474MN500 | SM2225U474M501LNXH-3 |
| 187 | SM057C564KHN480 | 501P45W564KN3H | UTC4197-187 | PCI1551-187 | SMP5E564KN500 | SM2225U564K501LNXH-4 |
| 188 | SM057C564MHN480 | 501P45W564MN3H | UTC4197-188 | PCI1551-188 | SMP5E564MN500 | SM2225U564M501LNXH-4 |
| 189 | SM057C684KHN650 | 501P55W684KN3H | UTC4197-189 | PCI1551-189 | SMP5E684KN500 | SM2225U684K501LNXH-5 |
| 190 | SM057C684MHN650 | 501P55W684MN3H | UTC4197-190 | PCI1551-190 | SMP5E684MN500 | SM2225U684M501LNXH-5 |
| 191 | SM047C105KHN360 | 501P34W105KN3H | UTC4197-191 | PCI1551-191 | SMP4E105KN500 | SM3640U105K501LNXH-3 |
| 192 | SM047C105MHN360 | 501P34W105MN3H | UTC4197-192 | PCI1551-192 | SMP4E105MN500 | SM3640U105M501LNXH-3 |
| 193 | SM047C125KHN360 | 501P34W125KN3H | UTC4197-193 | PCI1551-193 | SMP4E125KN500 | SM3640U125K501LNXH-3 |
| 194 | SM047C125MHN360 | 501P34W125MN3H | UTC4197-194 | PCI1551-194 | SMP4E125MN500 | SM3640U125M501LNXH-3 |
| 195 | SM047C155KHN480 | 501P44W155KN3H | UTC4197-195 | PCI1551-195 | SMP4E155KN500 | SM3640U155K501LNXH-4 |
| 196 | SM047C155MHN480 | 501P44W155MN3H | UTC4197-196 | PCI1551-196 | SMP4E155MN500 | SM3640U155M501LNXH-4 |
| 197 | SM047C185KHN650 | 501P54W185KN3H | UTC4197-197 | PCI1551-197 | SMP4E185KN500 | SM3640U185K501LNXH-5 |
| 198 | SM047C185MHN650 | 501P54W185MN3H | UTC4197-198 | PCI1551-198 | SMP4E185MN500 | SM3640U185M501LNXH-5 |
| 199 | SM037C275KHN360 | 501P33W275KN3H | UTC4197-199 | PCI1551-199 | SMP3E275KN500 | SM43100U275K501LNXH-3 |
| 200 | SM037C275MHN360 | 501P33W275MN3H | UTC4197-200 | PCI1551-200 | SMP3E275MN500 | SM43100U275M501LNXH-3 |
| 201 | SM037C335KHN360 | 501P33W335KN3H | UTC4197-201 | PCI1551-201 | SMP3E335KN500 | SM43100U335K501LNXH-3 |
| 202 | SM037C335MHN360 | 501P33W335MN3H | UTC4197-202 | PCI1551-202 | SMP3E335MN500 | SM43100U335M501LNXH-3 |
| 203 | SM037C395KHN360 | 501P33W395KN3H | UTC4197-203 | PCI1551-203 | SMP3E395KN500 | SM43100U395K501LNXH-3 |
| 204 | SM037C395MHN360 | 501P33W395MN3H | UTC4197-204 | PCI1551-204 | SMP3E395MN500 | SM43100U395M501LNXH-3 |
| 205 | SM037C475KHN480 | 501P43W475KN3H | UTC4197-205 | PCI1551-205 | SMP3E475KN500 | SM43100U475K501LNXH-4 |
| 206 | SM037C475MHN480 | 501P43W475MN3H | UTC4197-206 | PCI1551-206 | SMP3E475MN500 | SM43100U475M501LNXH-4 |
| 207 | SM037C565KHN650 | 501P53W565KN3H | UTC4197-207 | PCI1551-207 | SMP3E565KN500 | SM43100U565K501LNXH-5 |
| 208 | SM037C565MHN650 | 501P53W565MN3H | UTC4197-208 | PCI1551-208 | SMP3E565MN500 | SM43100U565M501LNXH-5 |
| 209 | SM017C825KHN480 | 501P41W825KN3H | UTC4197-209 | PCI1551-209 | SMP1E825KN500 | |
| 210 | SM017C825MHN480 | 501P41W825MN3H | UTC4197-210 | PCI1551-210 | SMP1E825MN500 | |
| 211 | SM017C106KHN480 | 501P41W106KN3H | UTC4197-211 | PCI1551-211 | SMP1E106KN500 | |
| 212 | SM017C106MHN480 | 501P41W106MN3H | UTC4197-212 | PCI1551-212 | SMP1E106MN500 | |
| 213 | SM017C126KHN650 | 501P51W126KN3H | UTC4197-213 | PCI1551-213 | SMP1E126KN500 | |
| 214 | SM017C126MHN650 | 501P51W126MN3H | UTC4197-214 | PCI1551-214 | SMP1E126MN500 | |
| 215 | SM027C186KHN650 | 501P52W186KN3H | UTC4197-215 | PCI1551-215 | SMP2E186KN500 | |
| 216 | SM027C186MHN650 | 501P52W186MN3H | UTC4197-216 | PCI1551-216 | SMP2E186MN500 | |

See footnote at end of table.

| | | | |
|--|-------------|-----------------------|----------------|
| DEFENSE SUPPLY CENTER, COLUMBUS | SIZE | CODE IDENT NO. | DWG NO. |
| COLUMBUS, OHIO | A | 14933 | 87106 |
| | | REV U | PAGE 24 |

TABLE IV. Similar vendor types - Continued.

| DSCC drawing PIN 87106- | Vendor A similar vendor type 1/ | Vendor B similar vendor type 1/ | Vendor C similar vendor type 1/ | Vendor D similar vendor type 1/ | Vendor E similar vendor type 1/ | Vendor F similar vendor type 1/ | |
|-------------------------|---------------------------------|---------------------------------|---------------------------------|---------------------------------|---------------------------------|--|-----------------------|
| 217 | SM067C276KHN360 | 501P36W276KN3H | UTC4197-217 | PCI1551-217 | SMP6E276KN500 | SM3640X685K500LNXH-3 SM3640X685M500LNXH-3 | |
| 218 | SM067C276MHN360 | 501P36W276MN3H | UTC4197-218 | PCI1551-218 | SMP6E276MN500 | | |
| 219 | SM067C336KHN480 | 501P46W336KN3H | UTC4197-219 | PCI1551-219 | SMP6E336KN500 | | |
| 220 | SM067C336MHN480 | 501P46W336MN3H | UTC4197-220 | PCI1551-220 | SMP6E336MN500 | | |
| 221 | SM067C396KHN650 | 501P56W396KN3H | UTC4197-221 | PCI1551-221 | SMP6E396KN500 | | |
| 222 | SM067C396MHN650 | 501P56W396MN3H | UTC4197-222 | PCI1551-222 | SMP6E396MN500 | | |
| 223 | SM045C685KHN360 | 500P34W685KN3H | UTC4197-223 | PCI1551-223 | SMP4E685KN050 | | |
| 224 | SM045C685MHN360 | 500P34W685MN3H | UTC4197-224 | PCI1551-224 | SMP4E685MN050 | | |
| 225 | SM015C566KHN360 | 500P31W566KN3H | UTC4197-225 | PCI1551-225 | SMP3E566KN050 | | |
| 226 | SM015C566MHN360 | 500P31W566MN3H | UTC4197-226 | PCI1551-226 | SMP3E566MN050 | | |
| 227 | SM025C127KHN480 | 500P42W127KN3H | | PCI1551-227 | SMP2E127KN050 | | |
| 228 | SM025C127MHN480 | 500P42W127MN3H | | PCI1551-228 | SMP2E127MN050 | | |
| 229 | SM031C106KHN240 | 101P23W106KN3H | UTC4197-229 | PCI1551-229 | SMP3E106KN100 | | SM43100X106K101LNXH-2 |
| 230 | SM031C106MHN240 | 101P23W106MN3H | UTC4197-230 | PCI1551-230 | SMP3E106MN100 | | SM43100X106M101LNXH-2 |
| 231 | SM047C824KHN360 | 501P34W824KN3H | UTC4197-231 | PCI1551-231 | SMP4E824KN500 | | SM3640U824K501LNXH-3 |
| 232 | SM047C824MHN360 | 501P34W824MN3H | UTC4197-232 | PCI1551-232 | SMP4E824MN500 | | SM3640U824M501LNXH-3 |
| 233 | SM037C225KHN240 | 501P23W225KN3H | UTC4197-233 | PCI1551-233 | SMP3E225KN500 | | SM43100U225K501LNXH-2 |
| 234 | SM037C225MHN240 | 501P23W225MN3H | UTC4197-234 | PCI1551-234 | SMP3E225MN500 | | SM43100U225M501LNXH-2 |
| 235 | SM017C685KHN480 | 501P41W685KN3H | UTC4197-235 | PCI1551-235 | SMP1E685KN500 | | |
| 236 | SM017C685MHN480 | 501P41W685MN3H | UTC4197-236 | PCI1551-236 | SMP1E685MN500 | | |
| 237 | SM027C156KHN650 | 501P52W156KN3H | UTC4197-237 | PCI1551-237 | SMP2E156KN500 | | |
| 238 | SM027C156MHN650 | 501P52W156MN3H | UTC4197-238 | PCI1551-238 | SMP2E156MN500 | | |
| 239 | SM067C226KHN360 | 501P36W226KN3H | UTC4197-239 | PCI1551-239 | SMP6E226KN500 | | |
| 240 | SM067C226MHN360 | 501P36W226MN3H | UTC4197-240 | PCI1551-240 | SMP6E226MN500 | | |
| 241 | SM055C105KHJ120 | 500P05W105KJ3H | UTC4197-241 | PCI1551-241 | SMP5E105KJ050 | | SM2225X105K500LJXH-1 |
| 242 | SM055C105MHJ120 | 500P05W105MJ3H | UTC4197-242 | PCI1551-242 | SMP5E105MJ050 | | SM2225X105M500LJXH-1 |
| 243 | SM055C125KHJ120 | 500P05W125KJ3H | UTC4197-243 | PCI1551-243 | SMP5E125KJ050 | | SM2225X125K500LJXH-1 |
| 244 | SM055C125MHJ120 | 500P05W125MJ3H | UTC4197-244 | PCI1551-244 | SMP5E125MJ050 | SM2225X125M500LJXH-1 | |
| 245 | SM055C155KHJ240 | 500P25W155KJ3H | UTC4197-245 | PCI1551-245 | SMP5E155KJ050 | SM2225X155K500LJXH-2 | |
| 246 | SM055C155MHJ240 | 500P25W155MJ3H | UTC4197-246 | PCI1551-246 | SMP5E155MJ050 | SM2225X155M500LJXH-2 | |
| 247 | SM055C185KHJ240 | 500P25W185KJ3H | UTC4197-247 | PCI1551-247 | SMP5E185KJ050 | SM2225X185K500LJXH-2 | |
| 248 | SM055C185MHJ240 | 500P25W185MJ3H | UTC4197-248 | PCI1551-248 | SMP5E185MJ050 | SM2225X185M500LJXH-2 | |
| 249 | SM055C225KHJ240 | 500P25W225KJ3H | UTC4197-249 | PCI1551-249 | SMP5E225KJ050 | SM2225X225K500LJXH-2 | |
| 250 | SM055C225MHJ240 | 500P25W225MJ3H | UTC4197-250 | PCI1551-250 | SMP5E225MJ050 | SM2225X225M500LJXH-2 | |
| 251 | SM055C275KHJ360 | 500P35W275KJ3H | UTC4197-251 | PCI1551-251 | SMP5E275KJ050 | SM2225X275K500LJXH-3 | |
| 252 | SM055C275MHJ360 | 500P35W275MJ3H | UTC4197-252 | PCI1551-252 | SMP5E275MJ050 | SM2225X275M500LJXH-3 | |
| 253 | SM055C335KHJ360 | 500P35W335KJ3H | UTC4197-253 | PCI1551-253 | SMP5E335KJ050 | SM2225X335K500LJXH-3 | |
| 254 | SM055C335MHJ360 | 500P35W335MJ3H | UTC4197-254 | PCI1551-254 | SMP5E335MJ050 | SM2225X335M500LJXH-3 | |
| 255 | SM055C395KHJ480 | 500P45W395KJ3H | UTC4197-255 | PCI1551-255 | SMP5E395KJ050 | SM2225X395K500LJXH-4 | |
| 256 | SM055C395MHJ480 | 500P45W395MJ3H | UTC4197-256 | PCI1551-256 | SMP5E395MJ050 | SM2225X395M500LJXH-4 | |
| 257 | SM055C475KHJ480 | 500P45W475KJ3H | UTC4197-257 | PCI1551-257 | SMP5E475KJ050 | SM2225X475K500LJXH-4 | |
| 258 | SM055C475MHJ480 | 500P45W475MJ3H | UTC4197-258 | PCI1551-258 | SMP5E475MJ050 | SM2225X475M500LJXH-4 | |
| 259 | SM055C565KHJ650 | 500P55W565KJ3H | UTC4197-259 | PCI1551-259 | SMP5E565KJ050 | SM2225X565K500LJXH-5 | |
| 260 | SM055C565MHJ650 | 500P55W565MJ3H | UTC4197-260 | PCI1551-260 | SMP5E565MJ050 | SM2225X565M500LJXH-5 | |
| 261 | SM045C685KHJ360 | 500P34W685KJ3H | UTC4197-261 | PCI1551-261 | SMP4E685KJ050 | SM3640X685K500LJXH-3 | |
| 262 | SM045C685MHJ360 | 500P34W685MJ3H | UTC4197-262 | PCI1551-262 | SMP4E685MJ050 | SM3640X685M500LJXH-3 | |
| 263 | SM045C825KHJ360 | 500P34W825KJ3H | UTC4197-263 | PCI1551-263 | SMP4E825KJ050 | SM3640X825K500LJXH-3 | |
| 264 | SM045C825MHJ360 | 500P34W825MJ3H | UTC4197-264 | PCI1551-264 | SMP4E825MJ050 | SM3640X825M500LJXH-3 | |
| 265 | SM045C106KHJ480 | 500P44W106KJ3H | UTC4197-265 | PCI1551-265 | SMP4E106KJ050 | SM3640X106K500LJXH-4 | |
| 266 | SM045C106MHJ480 | 500P44W106MJ3H | UTC4197-266 | PCI1551-266 | SMP4E106MJ050 | SM3640X106M500LJXH-4 | |
| 267 | SM045C126KHJ480 | 500P44W126KJ3H | UTC4197-267 | PCI1551-267 | SMP4E126KJ050 | SM3640X126K500LJXH-4 | |
| 268 | SM045C126MHJ480 | 500P44W126MJ3H | UTC4197-268 | PCI1551-268 | SMP4E126MJ050 | SM3640X126M500LJXH-4 | |
| 269 | SM045C156KHJ650 | 500P54W156KJ3H | UTC4197-269 | PCI1551-269 | SMP4E156KJ050 | SM3640X156K500LJXH-5 | |
| 270 | SM045C156MHJ650 | 500P54W156MJ3H | UTC4197-270 | PCI1551-270 | SMP4E156MJ050 | SM3640X156M500LJXH-5 | |

See footnote at end of table.

| | | | |
|--|-------------|-----------------------|----------------|
| DEFENSE SUPPLY CENTER, COLUMBUS | SIZE | CODE IDENT NO. | DWG NO. |
| COLUMBUS, OHIO | A | 14933 | 87106 |
| | | REV U | PAGE 25 |

TABLE IV. Similar vendor types - Continued.

| DSCC drawing PIN 87106- | Vendor A similar vendor type 1/ | Vendor B similar vendor type 1/ | Vendor C similar vendor type 1/ | Vendor D similar vendor type 1/ | Vendor E similar vendor type 1/ | Vendor F similar vendor type 1/ |
|-------------------------|---------------------------------|---------------------------------|---------------------------------|---------------------------------|---------------------------------|---------------------------------|
| 271 | SM035C186KHJ240 | 500P23W186KJ3H | UTC4197-271 | PCI1551-271 | SMP3E186KJ050 | SM43100X186K500LJXH-2 |
| 272 | SM035C186MHJ240 | 500P23W186MJ3H | UTC4197-272 | PCI1551-272 | SMP3E186MJ050 | SM43100X186M500LJXH-2 |
| 273 | SM035C226KHJ360 | 500P33W226KJ3H | UTC4197-273 | PCI1551-273 | SMP3E226KJ050 | SM43100X226K500LJXH-3 |
| 274 | SM035C226MHJ360 | 500P33W226MJ3H | UTC4197-274 | PCI1551-274 | SMP3E226MJ050 | SM43100X226M500LJXH-3 |
| 275 | SM035C276KHJ360 | 500P33W276KJ3H | UTC4197-275 | PCI1551-275 | SMP3E276KJ050 | SM43100X276K500LJXH-3 |
| 276 | SM035C276MHJ360 | 500P33W276MJ3H | UTC4197-276 | PCI1551-276 | SMP3E276MJ050 | SM43100X276M500LJXH-3 |
| 277 | SM035C336KHJ360 | 500P33W336KJ3H | UTC4197-277 | PCI1551-277 | SMP3E336KJ050 | SM43100X336K500LJXH-3 |
| 278 | SM035C336MHJ360 | 500P33W336MJ3H | UTC4197-278 | PCI1551-278 | SMP3E336MJ050 | SM43100X336M500LJXH-3 |
| 279 | SM035C396KHJ480 | 500P43W396KJ3H | UTC4197-279 | PCI1551-279 | SMP3E396KJ050 | SM43100X396K500LJXH-4 |
| 280 | SM035C396MHJ480 | 500P43W396MJ3H | UTC4197-280 | PCI1551-280 | SMP3E396MJ050 | SM43100X396M500LJXH-4 |
| 281 | SM035C476KHJ650 | 500P53W476KJ3H | UTC4197-281 | PCI1551-281 | SMP3E476KJ050 | SM43100X476K500LJXH-5 |
| 282 | SM035C476MHJ650 | 500P53W476MJ3H | UTC4197-282 | PCI1551-282 | SMP3E476MJ050 | SM43100X476M500LJXH-5 |
| 283 | SM015C566KHJ360 | 500P31W566KJ3H | UTC4197-283 | PCI1551-283 | SMP3E566KJ050 | |
| 284 | SM015C566MHJ360 | 500P31W566MJ3H | UTC4197-284 | PCI1551-284 | SMP3E566MJ050 | |
| 285 | SM015C686KHJ480 | 500P41W686KJ3H | UTC4197-285 | PCI1551-285 | SMP1E686KJ050 | |
| 286 | SM015C686MHJ480 | 500P41W686MJ3H | UTC4197-286 | PCI1551-286 | SMP1E686MJ050 | |
| 287 | SM015C826KHJ480 | 500P41W826KJ3H | UTC4197-287 | PCI1551-287 | SMP1E826KJ050 | |
| 288 | SM015C826MHJ480 | 500P41W826MJ3H | UTC4197-288 | PCI1551-288 | SMP1E826MJ050 | |
| 289 | SM015C107KHJ650 | 500P51W107KJ3H | UTC4197-289 | PCI1551-289 | SMP1E107KJ050 | |
| 290 | SM015C107MHJ650 | 500P51W107MJ3H | UTC4197-290 | PCI1551-290 | SMP1E107MJ050 | |
| 291 | SM025C127KHJ480 | 500P42W127KJ3H | | PCI1551-291 | SMP2E127KJ050 | |
| 292 | SM025C127MHJ480 | 500P42W127MJ3H | | PCI1551-292 | SMP2E127MJ050 | |
| 293 | SM025C157KHJ650 | 500P52W157KJ3H | | PCI1551-293 | SMP2E157KJ050 | |
| 294 | SM025C157MHJ650 | 500P52W157MJ3H | | PCI1551-294 | SMP2E157MJ050 | |
| 295 | SM065C187KHJ480 | 500P46W187KJ3H | | | SMP6E187KJ050 | |
| 296 | SM065C187MHJ480 | 500P46W187MJ3H | | | SMP6E187MJ050 | |
| 297 | SM065C227KHJ480 | 500P46W227KJ3H | | | SMP6E227KJ050 | |
| 298 | SM065C227MHJ480 | 500P46W227MJ3H | | | SMP6E227MJ050 | |
| 299 | SM065C277KHJ650 | 500P56W277KJ3H | | | SMP6E277KJ050 | |
| 300 | SM065C277MHJ650 | 500P56W277MJ3H | | | SMP6E277MJ050 | |
| 301 | SM051C684KHJ120 | 101P05W684KJ3H | UTC4197-301 | PCI1551-301 | SMP5E684KJ100 | SM2225X684K101LJXH-1 |
| 302 | SM051C684MHJ120 | 101P05W684MJ3H | UTC4197-302 | PCI1551-302 | SMP5E684MJ100 | SM2225X684M101LJXH-1 |
| 303 | SM051C824KHJ240 | 101P25W824KJ3H | UTC4197-303 | PCI1551-303 | SMP5E824KJ100 | SM2225X824K101LJXH-2 |
| 304 | SM051C824MHJ240 | 101P25W824MJ3H | UTC4197-304 | PCI1551-304 | SMP5E824MJ100 | SM2225X824M101LJXH-2 |
| 305 | SM051C105KHJ240 | 101P25W105KJ3H | UTC4197-305 | PCI1551-305 | SMP5E105KJ100 | SM2225X105K101LJXH-2 |
| 306 | SM051C105MHJ240 | 101P25W105MJ3H | UTC4197-306 | PCI1551-306 | SMP5E105MJ100 | SM2225X105M101LJXH-2 |
| 307 | SM051C125KHJ240 | 101P25W125KJ3H | UTC4197-307 | PCI1551-307 | SMP5E125KJ100 | SM2225X125K101LJXH-2 |
| 308 | SM051C125MHJ240 | 101P25W125MJ3H | UTC4197-308 | PCI1551-308 | SMP5E125MJ100 | SM2225X125M101LJXH-2 |
| 309 | SM051C155KHJ360 | 101P35W155KJ3H | UTC4197-309 | PCI1551-309 | SMP5E155KJ100 | SM2225X155K101LJXH-3 |
| 310 | SM051C155MHJ360 | 101P35W155MJ3H | UTC4197-310 | PCI1551-310 | SMP5E155MJ100 | SM2225X155M101LJXH-3 |
| 311 | SM051C185KHJ360 | 101P35W185KJ3H | UTC4197-311 | PCI1551-311 | SMP5E185KJ100 | SM2225X185K101LJXH-3 |
| 312 | SM051C185MHJ360 | 101P35W185MJ3H | UTC4197-312 | PCI1551-312 | SMP5E185MJ100 | SM2225X185M101LJXH-3 |
| 313 | SM051C225KHJ480 | 101P45W225KJ3H | UTC4197-313 | PCI1551-313 | SMP5E225KJ100 | SM2225X225K101LJXH-4 |
| 314 | SM051C225MHJ480 | 101P45W225MJ3H | UTC4197-314 | PCI1551-314 | SMP5E225MJ100 | SM2225X225M101LJXH-4 |
| 315 | SM051C275KHJ480 | 101P45W275KJ3H | UTC4197-315 | PCI1551-315 | SMP5E275KJ100 | SM2225X275K101LJXH-4 |
| 316 | SM051C275MHJ480 | 101P45W275MJ3H | UTC4197-316 | PCI1551-316 | SMP5E275MJ100 | SM2225X275M101LJXH-4 |
| 317 | SM051C335KHJ650 | 101P55W335KJ3H | UTC4197-317 | PCI1551-317 | SMP5E335KJ100 | SM2225X335K101LJXH-5 |
| 318 | SM051C335MHJ650 | 101P55W335MJ3H | UTC4197-318 | PCI1551-318 | SMP5E335MJ100 | SM2225X335M101LJXH-5 |
| 319 | SM041C395KHJ360 | 101P34W395KJ3H | UTC4197-319 | PCI1551-319 | SMP4E395KJ100 | SM3640X395K101LJXH-3 |
| 320 | SM041C395MHJ360 | 101P34W395MJ3H | UTC4197-320 | PCI1551-320 | SMP4E395MJ100 | SM3640X395M101LJXH-3 |
| 321 | SM041C475KHJ360 | 101P34W475KJ3H | UTC4197-321 | PCI1551-321 | SMP4E475KJ100 | SM3640X475K101LJXH-3 |
| 322 | SM041C475MHJ360 | 101P34W475MJ3H | UTC4197-322 | PCI1551-322 | SMP4E475MJ100 | SM3640X475M101LJXH-3 |
| 323 | SM041C565KHJ480 | 101P44W565KJ3H | UTC4197-323 | PCI1551-323 | SMP4E565KJ100 | SM3640X565K101LJXH-4 |
| 324 | SM041C565MHJ480 | 101P44W565MJ3H | UTC4197-324 | PCI1551-324 | SMP4E565MJ100 | SM3640X565M101LJXH-4 |

See footnote at end of table.

| | | | |
|--|-------------|-----------------------|----------------|
| DEFENSE SUPPLY CENTER, COLUMBUS | SIZE | CODE IDENT NO. | DWG NO. |
| COLUMBUS, OHIO | A | 14933 | 87106 |
| | | REV U | PAGE 26 |

TABLE IV. Similar vendor types - Continued.

| DSCC drawing PIN 87106- | Vendor A similar vendor type 1/ | Vendor B similar vendor type 1/ | Vendor C similar vendor type 1/ | Vendor D similar vendor type 1/ | Vendor E similar vendor type 1/ | Vendor F similar vendor type 1/ |
|-------------------------|---------------------------------|---------------------------------|---------------------------------|---------------------------------|---------------------------------|---------------------------------|
| 325 | SM041C685KHJ480 | 101P44W685KJ3H | UTC4197-325 | PCI1551-325 | SMP4E685KJ100 | SM3640X685K101LJXH-4 |
| 326 | SM041C685MHJ480 | 101P44W685MJ3H | UTC4197-326 | PCI1551-326 | SMP4E685MJ100 | SM3640X685M101LJXH-4 |
| 327 | SM041C825KHJ650 | 101P54W825KJ3H | UTC4197-327 | PCI1551-327 | SMP4E825KJ100 | SM3640X825K101LJXH-5 |
| 328 | SM041C825MHJ650 | 101P54W825MJ3H | UTC4197-328 | PCI1551-328 | SMP4E825MJ100 | SM3640X825M101LJXH-5 |
| 329 | SM031C106KHJ240 | 101P23W106KJ3H | UTC4197-329 | PCI1551-329 | SMP3E106KJ100 | SM43100X106K101LJXH-2 |
| 330 | SM031C106MHJ240 | 101P23W106MJ3H | UTC4197-330 | PCI1551-330 | SMP3E106MJ100 | SM43100X106M101LJXH-2 |
| 331 | SM031C126KHJ240 | 101P23W126KJ3H | UTC4197-331 | PCI1551-331 | SMP3E126KJ100 | SM43100X126K101LJXH-2 |
| 332 | SM031C126MHJ240 | 101P23W126MJ3H | UTC4197-332 | PCI1551-332 | SMP3E126MJ100 | SM43100X126M101LJXH-2 |
| 333 | SM031C156KHJ360 | 101P33W156KJ3H | UTC4197-333 | PCI1551-333 | SMP3E156KJ100 | SM43100X156K101LJXH-3 |
| 334 | SM031C156MHJ360 | 101P33W156MJ3H | UTC4197-334 | PCI1551-334 | SMP3E156MJ100 | SM43100X156M101LJXH-3 |
| 335 | SM031C186KHJ360 | 101P33W186KJ3H | UTC4197-335 | PCI1551-335 | SMP3E186KJ100 | SM43100X186K101LJXH-3 |
| 336 | SM031C186MHJ360 | 101P33W186MJ3H | UTC4197-336 | PCI1551-336 | SMP3E186MJ100 | SM43100X186M101LJXH-3 |
| 337 | SM031C226KHJ480 | 101P43W226KJ3H | UTC4197-337 | PCI1551-337 | SMP3E226KJ100 | SM43100X226K101LJXH-4 |
| 338 | SM031C226MHJ480 | 101P43W226MJ3H | UTC4197-338 | PCI1551-338 | SMP3E226MJ100 | SM43100X226M101LJXH-4 |
| 339 | SM031C276KHJ650 | 101P53W276KJ3H | UTC4197-339 | PCI1551-339 | SMP3E276KJ100 | SM43100X276K101LJXH-5 |
| 340 | SM031C276MHJ650 | 101P53W276MJ3H | UTC4197-340 | PCI1551-340 | SMP3E276MJ100 | SM43100X276M101LJXH-5 |
| 341 | SM011C336KHJ360 | 101P31W336KJ3H | UTC4197-341 | PCI1551-341 | SMP1E336KJ100 | |
| 342 | SM011C336MHJ360 | 101P31W336MJ3H | UTC4197-342 | PCI1551-342 | SMP1E336MJ100 | |
| 343 | SM011C396KHJ480 | 101P41W396KJ3H | UTC4197-343 | PCI1551-343 | SMP1E396KJ100 | |
| 344 | SM011C396MHJ480 | 101P41W396MJ3H | UTC4197-344 | PCI1551-344 | SMP1E396MJ100 | |
| 345 | SM011C476KHJ480 | 101P41W476KJ3H | UTC4197-345 | PCI1551-345 | SMP1E476KJ100 | |
| 346 | SM011C476MHJ480 | 101P41W476MJ3H | UTC4197-346 | PCI1551-346 | SMP1E476MJ100 | |
| 347 | SM011C566KHJ650 | 101P51W566KJ3H | UTC4197-347 | PCI1551-347 | SMP1E566KJ100 | |
| 348 | SM011C566MHJ650 | 101P51W566MJ3H | UTC4197-348 | PCI1551-348 | SMP1E566MJ100 | |
| 349 | SM021C686KHJ480 | 101P42W686KJ3H | UTC4197-349 | PCI1551-349 | SMP2E686KJ100 | |
| 350 | SM021C686MHJ480 | 101P42W686MJ3H | UTC4197-350 | PCI1551-350 | SMP2E686MJ100 | |
| 351 | SM021C826KHJ650 | 101P52W826KJ3H | UTC4197-351 | PCI1551-351 | SMP2E826KJ100 | |
| 352 | SM021C826MHJ650 | 101P52W826MJ3H | UTC4197-352 | PCI1551-352 | SMP2E826MJ100 | |
| 353 | SM061C107KHJ360 | 101P36W107KJ3H | UTC4197-353 | PCI1551-353 | SMP6E107KJ100 | |
| 354 | SM061C107MHJ360 | 101P36W107MJ3H | UTC4197-354 | PCI1551-354 | SMP6E107MJ100 | |
| 355 | SM061C127KHJ360 | 101P36W127KJ3H | UTC4197-355 | PCI1551-355 | SMP6E127KJ100 | |
| 356 | SM061C127MHJ360 | 101P36W127MJ3H | UTC4197-356 | PCI1551-356 | SMP6E127MJ100 | |
| 357 | SM061C157KHJ480 | 101P46W157KJ3H | UTC4197-357 | PCI1551-357 | SMP6E157KJ100 | |
| 358 | SM061C157MHJ480 | 101P46W157MJ3H | UTC4197-358 | PCI1551-358 | SMP6E157MJ100 | |
| 359 | SM061C187KHJ650 | 101P56W187KJ3H | UTC4197-359 | PCI1551-359 | SMP6E187KJ100 | |
| 360 | SM061C187MHJ650 | 101P56W187MJ3H | UTC4197-360 | PCI1551-360 | SMP6E187MJ100 | |
| 361 | SM052C474KHJ240 | 201P25W474KJ3H | UTC4197-361 | PCI1551-361 | SMP5E474KJ200 | SM2225T474K201LJXH-2 |
| 362 | SM052C474MHJ240 | 201P25W474MJ3H | UTC4197-362 | PCI1551-362 | SMP5E474MJ200 | SM2225T474M201LJXH-2 |
| 363 | SM052C564KHJ240 | 201P25W564KJ3H | UTC4197-363 | PCI1551-363 | SMP5E564KJ200 | SM2225T564K201LJXH-2 |
| 364 | SM052C564MHJ240 | 201P25W564MJ3H | UTC4197-364 | PCI1551-364 | SMP5E564MJ200 | SM2225T564M201LJXH-2 |
| 365 | SM052C684KHJ360 | 201P35W684KJ3H | UTC4197-365 | PCI1551-365 | SMP5E684KJ200 | SM2225T684K201LJXH-3 |
| 366 | SM052C684MHJ360 | 201P35W684MJ3H | UTC4197-366 | PCI1551-366 | SMP5E684MJ200 | SM2225T684M201LJXH-3 |
| 367 | SM052C824KHJ360 | 201P35W824KJ3H | UTC4197-367 | PCI1551-367 | SMP5E824KJ200 | SM2225T824K201LJXH-3 |
| 368 | SM052C824MHJ360 | 201P35W824MJ3H | UTC4197-368 | PCI1551-368 | SMP5E824MJ200 | SM2225T824M201LJXH-3 |
| 369 | SM052C105KHJ480 | 201P45W105KJ3H | UTC4197-369 | PCI1551-369 | SMP5E105KJ200 | SM2225T105K201LJXH-4 |
| 370 | SM052C105MHJ480 | 201P45W105MJ3H | UTC4197-370 | PCI1551-370 | SMP5E105MJ200 | SM2225T105M201LJXH-4 |
| 371 | SM052C125KHJ480 | 201P45W125KJ3H | UTC4197-371 | PCI1551-371 | SMP5E125KJ200 | SM2225T125K201LJXH-4 |
| 372 | SM052C125MHJ480 | 201P45W125MJ3H | UTC4197-372 | PCI1551-372 | SMP5E125MJ200 | SM2225T125M201LJXH-4 |
| 373 | SM052C155KHJ650 | 201P55W155KJ3H | UTC4197-373 | PCI1551-373 | SMP5E155KJ200 | SM2225T155K201LJXH-5 |
| 374 | SM052C155MHJ650 | 201P55W155MJ3H | UTC4197-374 | PCI1551-374 | SMP5E155MJ200 | SM2225T155M201LJXH-5 |
| 375 | SM042C185KHJ360 | 201P34W185KJ3H | UTC4197-375 | PCI1551-375 | SMP4E185KJ200 | SM3640T185K201LJXH-3 |
| 376 | SM042C185MHJ360 | 201P34W185MJ3H | UTC4197-376 | PCI1551-376 | SMP4E185MJ200 | SM3640T185M201LJXH-3 |
| 377 | SM042C225KHJ360 | 201P34W225KJ3H | UTC4197-377 | PCI1551-377 | SMP4E225KJ200 | SM3640T225K201LJXH-3 |
| 378 | SM042C225MHJ360 | 201P34W225MJ3H | UTC4197-378 | PCI1551-378 | SMP4E225MJ200 | SM3640T225M201LJXH-3 |

See footnote at end of table.

| | | | |
|--|-------------|-----------------------|----------------|
| DEFENSE SUPPLY CENTER, COLUMBUS | SIZE | CODE IDENT NO. | DWG NO. |
| COLUMBUS, OHIO | A | 14933 | 87106 |
| | | REV U | PAGE 27 |

TABLE IV. Similar vendor types - Continued.

| DSCC drawing PIN 87106- | Vendor A similar vendor type 1/ | Vendor B similar vendor type 1/ | Vendor C similar vendor type 1/ | Vendor D similar vendor type 1/ | Vendor E similar vendor type 1/ | Vendor F similar vendor type 1/ |
|-------------------------|---------------------------------|---------------------------------|---------------------------------|---------------------------------|---------------------------------|---------------------------------|
| 379 | SM042C275KHJ480 | 201P44W275KJ3H | UTC4197-379 | PCI1551-379 | SMP4E275KJ200 | SM3640T275K201LJXH-4 |
| 380 | SM042C275MHJ480 | 201P44W275MJ3H | UTC4197-380 | PCI1551-380 | SMP4E275MJ200 | SM3640T275M201LJXH-4 |
| 381 | SM042C335KHJ480 | 201P44W335KJ3H | UTC4197-381 | PCI1551-381 | SMP4E335KJ200 | SM3640T335K201LJXH-4 |
| 382 | SM042C335MHJ480 | 201P44W335MJ3H | UTC4197-382 | PCI1551-382 | SMP4E335MJ200 | SM3640T335M201LJXH-4 |
| 383 | SM042C395KHJ650 | 201P54W395KJ3H | UTC4197-383 | PCI1551-383 | SMP4E395KJ200 | SM3640T395K201LJXH-5 |
| 384 | SM042C395MHJ650 | 201P54W395MJ3H | UTC4197-384 | PCI1551-384 | SMP4E395MJ200 | SM3640T395M201LJXH-5 |
| 385 | SM032C475KHJ240 | 201P23W475KJ3H | UTC4197-385 | PCI1551-385 | SMP3E475KJ200 | SM43100T475K201LJXH-2 |
| 386 | SM032C475MHJ240 | 201P23W475MJ3H | UTC4197-386 | PCI1551-386 | SMP3E475MJ200 | SM43100T475M201LJXH-2 |
| 387 | SM032C565KHJ240 | 201P23W565KJ3H | UTC4197-387 | PCI1551-387 | SMP3E565KJ200 | SM43100T565K201LJXH-2 |
| 388 | SM032C565MHJ240 | 201P23W565MJ3H | UTC4197-388 | PCI1551-388 | SMP3E565MJ200 | SM43100T565M201LJXH-2 |
| 389 | SM032C685KHJ360 | 201P33W685KJ3H | UTC4197-389 | PCI1551-389 | SMP3E685KJ200 | SM43100T685K201LJXH-3 |
| 390 | SM032C685MHJ360 | 201P33W685MJ3H | UTC4197-390 | PCI1551-390 | SMP3E685MJ200 | SM43100T685M201LJXH-3 |
| 391 | SM032C825KHJ360 | 201P33W825KJ3H | UTC4197-391 | PCI1551-391 | SMP3E825KJ200 | SM43100T825K201LJXH-3 |
| 392 | SM032C825MHJ360 | 201P33W825MJ3H | UTC4197-392 | PCI1551-392 | SMP3E825MJ200 | SM43100T825M201LJXH-3 |
| 393 | SM032C106KHJ480 | 201P43W106KJ3H | UTC4197-393 | PCI1551-393 | SMP3E106KJ200 | SM43100T106K201LJXH-4 |
| 394 | SM032C106MHJ480 | 201P43W106MJ3H | UTC4197-394 | PCI1551-394 | SMP3E106MJ200 | SM43100T106M201LJXH-4 |
| 395 | SM032C126KHJ650 | 201P53W126KJ3H | UTC4197-395 | PCI1551-395 | SMP3E126KJ200 | SM43100T126K201LJXH-5 |
| 396 | SM032C126MHJ650 | 201P53W126MJ3H | UTC4197-396 | PCI1551-396 | SMP3E126MJ200 | SM43100T126M201LJXH-5 |
| 397 | SM012C156KHJ360 | 201P31W156KJ3H | UTC4197-397 | PCI1551-397 | SMP1E156KJ200 | |
| 398 | SM012C156MHJ360 | 201P31W156MJ3H | UTC4197-398 | PCI1551-398 | SMP1E156MJ200 | |
| 399 | SM012C186KHJ480 | 201P41W186KJ3H | UTC4197-399 | PCI1551-399 | SMP1E186KJ200 | |
| 400 | SM012C186MHJ480 | 201P41W186MJ3H | UTC4197-400 | PCI1551-400 | SMP1E186MJ200 | |
| 401 | SM012C226KHJ650 | 201P51W226KJ3H | UTC4197-401 | PCI1551-401 | SMP1E226KJ200 | |
| 402 | SM012C226MHJ650 | 201P51W226MJ3H | UTC4197-402 | PCI1551-402 | SMP1E226MJ200 | |
| 403 | SM012C276KHJ650 | 201P51W276KJ3H | UTC4197-403 | PCI1551-403 | SMP1E276KJ200 | |
| 404 | SM012C276MHJ650 | 201P51W276MJ3H | UTC4197-404 | PCI1551-404 | SMP1E276MJ200 | |
| 405 | SM022C336KHJ480 | 201P42W336KJ3H | UTC4197-405 | PCI1551-405 | SMP2E336KJ200 | |
| 406 | SM022C336MHJ480 | 201P42W336MJ3H | UTC4197-406 | PCI1551-406 | SMP2E336MJ200 | |
| 407 | SM022C396KHJ650 | 201P52W396KJ3H | UTC4197-407 | PCI1551-407 | SMP2E396KJ200 | |
| 408 | SM022C396MHJ650 | 201P52W396MJ3H | UTC4197-408 | PCI1551-408 | SMP2E396MJ200 | |
| 409 | SM062C476KHJ240 | 201P26W476KN3H | UTC4197-409 | | SMP6E476KJ200 | |
| 410 | SM062C476MHJ240 | 201P26W476MN3H | UTC4197-410 | | SMP6E476MJ200 | |
| 411 | SM062C566KHJ360 | 201P36W566KJ3H | UTC4197-411 | | SMP6E566KJ200 | |
| 412 | SM062C566MHJ360 | 201P36W566MN3H | UTC4197-412 | | SMP6E566MJ200 | |
| 413 | SM062C686KHJ360 | 201P36W686KJ3H | UTC4197-413 | | SMP6E686KJ200 | |
| 414 | SM062C686MHJ360 | 201P36W686MN3H | UTC4197-414 | | SMP6E686MJ200 | |
| 415 | SM062C826KHJ480 | 201P46W826KJ3H | UTC4197-415 | | SMP6E826KJ200 | |
| 416 | SM062C826MHJ480 | 201P46W826MJ3H | UTC4197-416 | | SMP6E826MJ200 | |
| 417 | SM062C107KHJ650 | 201P56W107KJ3H | UTC4197-417 | | SMP6E107KJ200 | |
| 418 | SM062C107MHJ650 | 201P56W107MJ3H | UTC4197-418 | | SMP6E107MJ200 | |
| 419 | SM062C127KHJ650 | 201P56W127KJ3H | UTC4197-419 | | SMP6E127KJ200 | |
| 420 | SM062C127MHJ650 | 201P56W127MJ3H | UTC4197-420 | | SMP6E127MJ200 | |
| 421 | SM057C154KHJ120 | 501P05W154KJ3H | UTC4197-421 | PCI1551-421 | SMP5E154KJ200 | SM2225U154K501LJXH-1 |
| 422 | SM057C154MHJ120 | 501P05W154MJ3H | UTC4197-422 | PCI1551-422 | SMP5E154MJ200 | SM2225U154M501LJXH-1 |
| 423 | SM057C184KHJ240 | 501P25W184KJ3H | UTC4197-423 | PCI1551-423 | SMP5E184KJ200 | SM2225U184K501LJXH-2 |
| 424 | SM057C184MHJ240 | 501P25W184MJ3H | UTC4197-424 | PCI1551-424 | SMP5E184MJ200 | SM2225U184M501LJXH-2 |
| 425 | SM057C224KHJ240 | 501P25W224KJ3H | UTC4197-425 | PCI1551-425 | SMP5E224KJ200 | SM2225U224K501LJXH-2 |
| 426 | SM057C224MHJ240 | 501P25W224MJ3H | UTC4197-426 | PCI1551-426 | SMP5E224MJ200 | SM2225U224M501LJXH-2 |
| 427 | SM057C274KHJ240 | 501P25W274KJ3H | UTC4197-427 | PCI1551-427 | SMP5E274KJ200 | SM2225U274K501LJXH-2 |
| 428 | SM057C274MHJ240 | 501P25W274MJ3H | UTC4197-428 | PCI1551-428 | SMP5E274MJ200 | SM2225U274M501LJXH-2 |
| 429 | SM057C334KHJ360 | 501P35W334KJ3H | UTC4197-429 | PCI1551-429 | SMP5E334KJ200 | SM2225U334K501LJXH-3 |
| 430 | SM057C334MHJ360 | 501P35W334MJ3H | UTC4197-430 | PCI1551-430 | SMP5E334MJ200 | SM2225U334M501LJXH-3 |
| 431 | SM057C394KHJ360 | 501P35W394KJ3H | UTC4197-431 | PCI1551-431 | SMP5E394KJ200 | SM2225U394K501LJXH-3 |
| 432 | SM057C394MHJ360 | 501P35W394MJ3H | UTC4197-432 | PCI1551-432 | SMP5E394MJ200 | SM2225U394M501LJXH-3 |

See footnote at end of table.

| | | | |
|--|-------------|-----------------------|----------------|
| DEFENSE SUPPLY CENTER, COLUMBUS | SIZE | CODE IDENT NO. | DWG NO. |
| COLUMBUS, OHIO | A | 14933 | 87106 |
| | | REV U | PAGE 28 |

TABLE IV. Similar vendor types - Continued.

| DSCC drawing PIN 87106- | Vendor A similar vendor type <u>1/</u> | Vendor B similar vendor type <u>1/</u> | Vendor C similar vendor type <u>1/</u> | Vendor D similar vendor type <u>1/</u> | Vendor E similar vendor type <u>1/</u> | Vendor F similar vendor type <u>1/</u> |
|-------------------------|--|--|--|--|--|--|
| 433 | SM057C474KHJ360 | 501P35W474KJ3H | UTC4197-433 | PCI1551-433 | SMP5E474KJ500 | SM2225U474K501LJXH-3 |
| 434 | SM057C474MHJ360 | 501P35W474MJ3H | UTC4197-434 | PCI1551-434 | SMP5E474MJ500 | SM2225U474M501LJXH-3 |
| 435 | SM057C564KHJ480 | 501P45W564KJ3H | UTC4197-435 | PCI1551-435 | SMP5E564KJ500 | SM2225U564K501LJXH-4 |
| 436 | SM057C564MHJ480 | 501P45W564MJ3H | UTC4197-436 | PCI1551-436 | SMP5E564MJ500 | SM2225U564M501LJXH-4 |
| 437 | SM057C684KHJ650 | 501P55W684KJ3H | UTC4197-437 | PCI1551-437 | SMP5E684KJ500 | SM2225U684K501LJXH-5 |
| 438 | SM057C684MHJ650 | 501P55W684MJ3H | UTC4197-438 | PCI1551-438 | SMP5E684MJ500 | SM2225U684M501LJXH-5 |
| 439 | SM047C824KHJ360 | 501P34W824KJ3H | UTC4197-439 | PCI1551-439 | SMP4E824KJ500 | SM3640U824K501LJXH-3 |
| 440 | SM047C824MHJ360 | 501P34W824MJ3H | UTC4197-440 | PCI1551-440 | SMP4E824MJ500 | SM3640U824M501LJXH-3 |
| 441 | SM047C105KHJ360 | 501P34W105KJ3H | UTC4197-441 | PCI1551-441 | SMP4E105KJ500 | SM3640U105K501LJXH-3 |
| 442 | SM047C105MHJ360 | 501P34W105MJ3H | UTC4197-442 | PCI1551-442 | SMP4E105MJ500 | SM3640U105M501LJXH-3 |
| 443 | SM047C125KHJ360 | 501P34W125KJ3H | UTC4197-443 | PCI1551-443 | SMP4E125KJ500 | SM3640U125K501LJXH-3 |
| 444 | SM047C125MHJ360 | 501P34W125MJ3H | UTC4197-444 | PCI1551-444 | SMP4E125MJ500 | SM3640U125M501LJXH-3 |
| 445 | SM047C155KHJ480 | 501P44W155KJ3H | UTC4197-445 | PCI1551-445 | SMP4E155KJ500 | SM3640U155K501LJXH-4 |
| 446 | SM047C155MHJ480 | 501P44W155MJ3H | UTC4197-446 | PCI1551-446 | SMP4E155MJ500 | SM3640U155M501LJXH-4 |
| 447 | SM047C185KHJ650 | 501P54W185KJ3H | UTC4197-447 | PCI1551-447 | SMP4E185KJ500 | SM3640U185K501LJXH-5 |
| 448 | SM047C185MHJ650 | 501P54W185MJ3H | UTC4197-448 | PCI1551-448 | SMP4E185MJ500 | SM3640U185M501LJXH-5 |
| 449 | SM037C225KHJ240 | 501P23W225KJ3H | UTC4197-449 | PCI1551-449 | SMP3E225KJ500 | SM43100U225K501LJXH-2 |
| 450 | SM037C225MHJ240 | 501P23W225MJ3H | UTC4197-450 | PCI1551-450 | SMP3E225MJ500 | SM43100U225M501LJXH-2 |
| 451 | SM037C275KHJ360 | 501P33W275KJ3H | UTC4197-451 | PCI1551-451 | SMP3E275KJ500 | SM43100U275K501LJXH-3 |
| 452 | SM037C275MHJ360 | 501P33W275MJ3H | UTC4197-452 | PCI1551-452 | SMP3E275MJ500 | SM43100U275M501LJXH-3 |
| 453 | SM037C335KHJ360 | 501P33W335KJ3H | UTC4197-453 | PCI1551-453 | SMP3E335KJ500 | SM43100U335K501LJXH-3 |
| 454 | SM037C335MHJ360 | 501P33W335MJ3H | UTC4197-454 | PCI1551-454 | SMP3E335MJ500 | SM43100U335M501LJXH-3 |
| 455 | SM037C395KHJ360 | 501P33W395KJ3H | UTC4197-455 | PCI1551-455 | SMP3E395KJ500 | SM43100U395K501LJXH-3 |
| 456 | SM037C395MHJ360 | 501P33W395MJ3H | UTC4197-456 | PCI1551-456 | SMP3E395MJ500 | SM43100U395M501LJXH-3 |
| 457 | SM037C475KHJ480 | 501P43W475KJ3H | UTC4197-457 | PCI1551-457 | SMP3E475KJ500 | SM43100U475K501LJXH-4 |
| 458 | SM037C475MHJ480 | 501P43W475MJ3H | UTC4197-458 | PCI1551-458 | SMP3E475MJ500 | SM43100U475M501LJXH-4 |
| 459 | SM037C565KHJ650 | 501P53W565KJ3H | UTC4197-459 | PCI1551-459 | SMP3E565KJ500 | SM43100U565K501LJXH-5 |
| 460 | SM037C565MHJ650 | 501P53W565MJ3H | UTC4197-460 | PCI1551-460 | SMP3E565MJ500 | SM43100U565M501LJXH-5 |
| 461 | SM017C685KHJ480 | 501P41W685KJ3H | UTC4197-461 | PCI1551-461 | SMP1E685KJ500 | |
| 462 | SM017C685MHJ480 | 501P41W685MJ3H | UTC4197-462 | PCI1551-462 | SMP1E685MJ500 | |
| 463 | SM017C825KHJ480 | 501P41W825KJ3H | UTC4197-463 | PCI1551-463 | SMP1E825KJ500 | |
| 464 | SM017C825MHJ480 | 501P41W825MJ3H | UTC4197-464 | PCI1551-464 | SMP1E825MJ500 | |
| 465 | SM017C106KHJ480 | 501P41W106KJ3H | UTC4197-465 | PCI1551-465 | SMP1E106KJ500 | |
| 466 | SM017C106MHJ480 | 501P41W106MJ3H | UTC4197-466 | PCI1551-466 | SMP1E106MJ500 | |
| 467 | SM017C126KHJ650 | 501P51W126KJ3H | UTC4197-467 | PCI1551-467 | SMP1E126KJ500 | |
| 468 | SM017C126MHJ650 | 501P51W126MJ3H | UTC4197-468 | PCI1551-468 | SMP1E126MJ500 | |
| 469 | SM027C156KHJ650 | 501P52W156KJ3H | UTC4197-469 | PCI1551-469 | SMP2E156KJ500 | |
| 470 | SM027C156MHJ650 | 501P52W156MJ3H | UTC4197-470 | PCI1551-470 | SMP2E156MJ500 | |
| 471 | SM027C186KHJ650 | 501P52W186KJ3H | UTC4197-471 | PCI1551-471 | SMP2E186KJ500 | |
| 472 | SM027C186MHJ650 | 501P52W186MJ3H | UTC4197-472 | PCI1551-472 | SMP2E186MJ500 | |
| 473 | SM067C226KHJ360 | 501P36W226KJ3H | UTC4197-473 | PCI1551-473 | SMP6E226KJ500 | |
| 474 | SM067C226MHJ360 | 501P36W226MJ3H | UTC4197-474 | PCI1551-474 | SMP6E226MJ500 | |
| 475 | SM067C276KHJ360 | 501P36W276KJ3H | UTC4197-475 | PCI1551-475 | SMP6E276KJ500 | |
| 476 | SM067C276MHJ360 | 501P36W276MJ3H | UTC4197-476 | PCI1551-476 | SMP6E276MJ500 | |
| 477 | SM067C336KHJ480 | 501P46W336KJ3H | UTC4197-477 | PCI1551-477 | SMP6E336KJ500 | |
| 478 | SM067C336MHJ480 | 501P46W336MJ3H | UTC4197-478 | PCI1551-478 | SMP6E336MJ500 | |
| 479 | SM067C396KHJ650 | 501P56W396KJ3H | UTC4197-479 | PCI1551-479 | SMP6E396KJ500 | |
| 480 | SM067C396MHJ650 | 501P56W396MJ3H | UTC4197-480 | PCI1551-480 | SMP6E396MJ500 | |

1/ CAUTION: Do not use this number for item acquisition. Items acquired to this number may not satisfy the performance requirements of this drawing.

| | | | |
|--|-------------|-----------------------|----------------|
| DEFENSE SUPPLY CENTER, COLUMBUS | SIZE | CODE IDENT NO. | DWG NO. |
| COLUMBUS, OHIO | A | 14933 | 87106 |
| | | REV U | PAGE 29 |

| <u>Vendor</u> | <u>Vendor CAGE</u> | <u>Vendor name and address</u> |
|---------------|--------------------|--|
| A | 96095 | Olean Advanced Products A Division of AVX Corporation 1695 Seneca Avenue Olean NY 14760-3736 |
| B | 07EN1 | Advanced Monolythic Ceramics, Incorporated 3101 Constitution Avenue, Suite 100 Olean NY 14760-1867 |
| C | 0YBX7 | Union Technology Corporation 718 Monterey Pass Road Monterey Park CA 91754-3607 |
| D | 60212 | Presidio Components Incorporated 7169 Construction Court San Diego CA 92121-2615 |
| E | 0LR95 | Spectrum Control Technology Incorporated 4100 Michoud Boulevard New Orleans LA 70129-2284 |
| F | 65238 | Novacap Incorporated 25136 Anza Drive Valencia CA 91355-3415 |

| | | | |
|---|-------------------|---------------------------------|--------------------------|
| DEFENSE SUPPLY CENTER, COLUMBUS COLUMBUS, OHIO | SIZE A | CODE IDENT NO. 14933 | DWG NO. 87106 |
| | | REV U | PAGE 30 |