

| REVISIONS | | | |
|-----------|-------------|---------|--------------------|
| SYMBOL | DESCRIPTION | DATE | APPROVAL |
| - | RELEASED | 7/21/92 | <i>[Signature]</i> |

SHEET REVISION STATUS

| | | | | | | | | | | | | | | | | | | | | | |
|-----|----|----|----|----|----|----|----|----|----|----|----|----|----|----|----|----|----|----|----|----|--|
| SH | 1 | 2 | 3 | 4 | 5 | 6 | 7 | 8 | 9 | 10 | 11 | 12 | 13 | 14 | 15 | 16 | 17 | 18 | 19 | 20 | |
| REV | -- | -- | -- | | | | | | | | | | | | | | | | | | |
| SH | 21 | 22 | 23 | 24 | 25 | 26 | 27 | 28 | 29 | 30 | 31 | 32 | 33 | 34 | 35 | 36 | 37 | 38 | 39 | 40 | |
| REV | | | | | | | | | | | | | | | | | | | | | |

| | | |
|---|-----------------|--|
| ORIGINATOR T. Perry/Paramax | DATE 7/14/92 | FSC: 5945 |
| APPROVED S. Archer-Davies/Paramax | — | Relays, Electromagnetic, Hermetically Sealed, 3PDT (3C), Latching, 25 Amperes, All Welded |
| CODE 311 APPROVAL P. Jones/GSEFC | 7-20-92 | |
| CODE 311 SUPERVISOR APVL G. P. Kramer, Jr./GSEFC | 7/20/92 | |
| ADDITIONAL APPROVAL | | |
| | | S-311-P-754/11 |

NATIONAL AERONAUTICS AND SPACE ADMINISTRATION
 GODDARD SPACE FLIGHT CENTER
 GREENBELT, MARYLAND 20771

CAGE CODE: 25306 PAGE 1 OF 3

GSFC DETAIL SPECIFICATION

RELAYS, ELECTROMAGNETIC, HERMETICALLY SEALED, 3PDT (3C),
LATCHING, 25 AMPERES, ALL WELDED

The requirements for procuring the relays described herein shall consist of this specification and the current revision of GSFC S-311-P-754 except failure rate level "M" is not applicable.

Table I. Part Numbers and characteristics

| GSFC Part Number | Similar to MIL Part Number | Terminal Type | Coil Voltage (Nominal) | Pickup Voltage (max.) | Dropout Voltage (min.) | DC Coil Resistance (ohms) |
|------------------|----------------------------|---------------|------------------------|-----------------------|------------------------|---------------------------|
| G311P754/11-001 | MS27742-1 | Solder Hook | 28.0 Vdc | 18.0 Vdc | N/A | 450 ± 10% |
| G311P754/11-002 | MS27742-2 | Plug-in | 28.0 Vdc | 18.0 Vdc | N/A | 450 ± 10% |

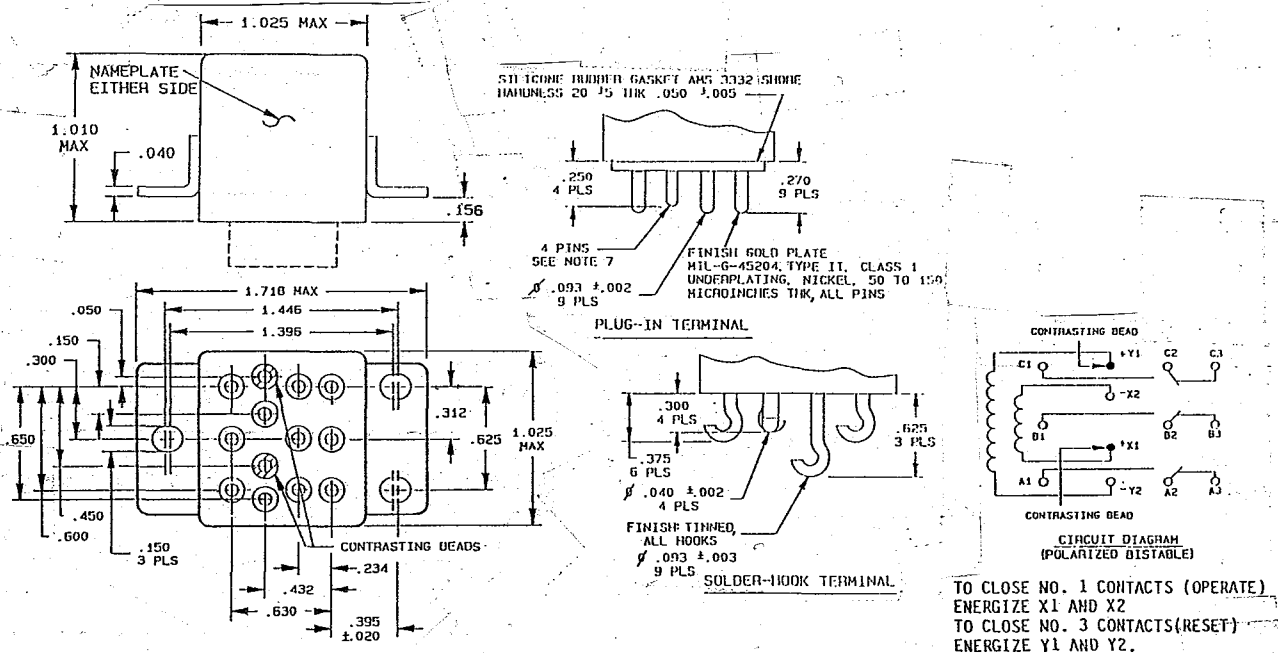


Figure 1. Configuration and circuit diagram.

Notes:

1. Relays must be provided with unpainted enclosures.
2. Terminal numbers do not appear on the header. There shall be affixed to each relay a suitable circuit diagram that identifies each terminal location.

REQUIREMENTS:

Operating Temperature Range: -70°C to +125°C

Other: All requirements (contact ratings, life test requirements, environmental data, etc.) shall be as specified in MS27742 except as detailed or modified herein.

Seal

Fine leak test 1 X 10⁻⁸ cc/sec max.
Gross leak test not applicable

Electrical measurements

Insulation resistance see MS27742
Dielectric strength see MS27742
Coil resistance see Table I
Pickup voltage (latch & reset) see Table I
Dropout voltage not applicable
Contact voltage drop..... 0.150 volt max.
Operate time (latch & reset) 15 ms max.
Release time not applicable
Bounce time see MS27742
Coil transient suppression not applicable
Neutral screen applicable

Vibration

Sinusoidal 30 g (10 - 3000 Hz)
Random not applicable

High temperature soak applicable
High temperature run-in not applicable
Low temperature run-in applicable
Room temperature run-in applicable

Seal

Fine leak test 1 x 10⁻⁸ cc/sec max.
Gross leak test applicable